



METHOD ARTICLE

REVISED A simple ATAC-seq protocol for population epigenetics**[version 2; peer review: 2 approved]**

Ronaldo de Carvalho Augusto ^{1,2}, Oliver Rey¹, Céline Cosseau¹, Cristian Chaparro ¹, Jérémie Vidal-Dupiol¹, Jean-François Allienne¹, David Duval¹, Silvain Pinaud^{1,3}, Sina Tönges⁴, Ranja Andriantsoa⁴, Emilien Luquet ⁵, Fabien Aubret^{6,7}, Mamadou Dia Sow ⁸, Patrice David⁹, Vicki Thomson ¹⁰, Dominique Joly¹¹, Mariana Gomes Lima¹², Déborah Federico¹³, Etienne Danchin¹³, Aki Minoda¹⁴, Christoph Grunau ¹

¹Univ. Montpellier, CNRS, IFREMER, UPVD, IHPE, F-66000 Perpignan and F-34095, Montpellier, France²LBM, Laboratoire de Biologie et Modélisation de la Cellule Univ Lyon, ENS de Lyon, Université Claude Bernard Lyon 1, CNRS, UMR 5239, INSERM, U1210, Lyon, 69007, France³Cancer Research UK, Cambridge Institute, University of Cambridge, Cambridge, UK⁴Division of Epigenetics, DKFZ ZMBH Alliance, German Cancer Research Center, Heidelberg, 69120, Germany⁵Univ Lyon, Université Claude Bernard Lyon 1, CNRS, Villeurbanne, 69622, France⁶CNRS, Station d'Ecologie Théorique et Expérimentale, Université Paul Sabatier, Moulis, 09200, France⁷School of Molecular and Life Sciences, Curtin University, Bentley, Australia⁸LBLGC, INRA, Université d'Orléans, Orléans, France⁹Univ. Montpellier, CNRS, CEFE, F-34293, Montpellier, France¹⁰School of Biological Sciences, University of Adelaide, Adelaide, 5005, Australia¹¹Laboratoire Evolution, Génomes Comportement, Ecologie, CNRS Université Paris Sud UMR 9191, Gif sur Yvette, 91198, France¹²Laboratório de Malacologia, Instituto Oswaldo Cruz/Fiocruz, Rio de Janeiro, RJ, Brazil¹³Laboratoire Évolution & Diversité Biologique (EDB UMR 5174), Université Fédérale de Toulouse; CNRS, Toulouse, 31062, France¹⁴RIKEN Center for Integrative Medical Sciences, Epigenome Technology Exploration Unit, Tsurumi, Kanagawa, 230-0045, Japan

v2 First published: 09 Jun 2020, 5:121
<https://doi.org/10.12688/wellcomeopenres.15552.1>

Latest published: 07 Jan 2021, 5:121
<https://doi.org/10.12688/wellcomeopenres.15552.2>

Abstract

We describe here a protocol for the generation of sequence-ready libraries for population epigenomics studies, and the analysis of alignment results. We show that the protocol can be used to monitor chromatin structure changes in populations when exposed to environmental cues. The protocol is a streamlined version of the Assay for transposase accessible chromatin with high-throughput sequencing (ATAC-seq) that provides a positive display of accessible, presumably euchromatic regions. The protocol is straightforward and can be used with small individuals such as daphnia and schistosome worms, and probably many other biological samples of comparable size (~10,000 cells), and it requires little molecular biology handling expertise.

Open Peer Review**Reviewer Status**

Invited Reviewers

1

2

version 2

(revision)

07 Jan 2021



report



report

**version 1**

09 Jun 2020



report




report

1. **Frédéric Bantignies** , University of Montpellier, Montpellier, France

Keywords

epigenetics, epigenomics, ATAC-seq, *Daphnia pulex*, *Schistosoma mansoni*

2. **José María Santos-Pereira** , Pablo de Olavide University, Seville, Spain

Any reports and responses or comments on the article can be found at the end of the article.

Corresponding author: Christoph Grunau (christoph.grunau@univ-perp.fr)

Author roles: **Augusto RdC:** Conceptualization, Investigation, Methodology, Writing – Original Draft Preparation, Writing – Review & Editing; **Rey O:** Conceptualization, Investigation, Supervision; **Cosseau C:** Investigation, Supervision; **Chaparro C:** Data Curation, Formal Analysis; **Vidal-Dupiol J:** Investigation, Supervision; **Allienne JF:** Investigation; **Duval D:** Methodology; **Pinaud S:** Methodology; **Tönges S:** Investigation; **Andriantsoa R:** Investigation; **Luquet E:** Investigation; **Aubret F:** Investigation; **Dia Sow M:** Investigation; **David P:** Formal Analysis; **Thomson V:** Investigation; **Joly D:** Conceptualization; **Gomes Lima M:** Investigation; **Federico D:** Investigation; **Danchin E:** Conceptualization; **Minoda A:** Conceptualization, Methodology, Writing – Original Draft Preparation, Writing – Review & Editing; **Grunau C:** Conceptualization, Funding Acquisition, Investigation, Methodology, Project Administration, Writing – Original Draft Preparation, Writing – Review & Editing

Competing interests: No competing interests were disclosed.

Grant information: This work was performed with the support of LabEx CeMEB, an ANR “Investissements d’avenir” program (ANR-10-LABX-04-01) and the RTP Epigenetics in Ecology and Evolution (RTP3E). R.A. and C.G. were supported by the Wellcome Trust Strategic award 107475/Z/15/Z. C.G. and A.M. received support from JSPS grant S17087.

The funders had no role in study design, data collection and analysis, decision to publish, or preparation of the manuscript.

Copyright: © 2021 Augusto RdC *et al.* This is an open access article distributed under the terms of the [Creative Commons Attribution License](https://creativecommons.org/licenses/by/4.0/), which permits unrestricted use, distribution, and reproduction in any medium, provided the original work is properly cited.

How to cite this article: Augusto RdC, Rey O, Cosseau C *et al.* **A simple ATAC-seq protocol for population epigenetics [version 2; peer review: 2 approved]** Wellcome Open Research 2021, 5:121 <https://doi.org/10.12688/wellcomeopenres.15552.2>

First published: 09 Jun 2020, 5:121 <https://doi.org/10.12688/wellcomeopenres.15552.1>

REVISED Amendments from Version 1

In this new version, we have added information that was requested by the reviewers. There are also new authors who contributed to this new, strongly revised version. In response to the reviewer comments we added:

- Environmental cues
- Counting of nuclei
- post-sequencing bioinformatics detection of chromatin structure differences
- two population epigenetics pilot studies *Daphnia* and *Schistosoma*

In particular, we added two examples of pilot population epigenetics studies to show the feasibility of the method from animal sampling to the bioinformatics analysis. However, the emphasis is on the wet-bench part.

Any further responses from the reviewers can be found at the end of the article

Introduction

Understanding the dynamic cross-talk between epigenetic mechanisms and environmental cues of animal populations is of fundamental importance for ecologists and evolutionary biologists (Shi *et al.*, 2019). The dynamics of chromatin has long been of interest as a source of phenotypic variance within and among animal populations (Hu & Barrett, 2017; Zhang *et al.*, 2018) and can affect their ecological performance (Augusto *et al.*, 2019; Hawes *et al.*, 2018). In eukaryotic cells, chromatin is a dynamic structure that provides epigenetic information to control cell and gene function (Chen & Dent, 2014). The physical organization of the chromatin landscape modulates accessibility of genomic regions and dynamically response to both external and internal stimuli. In general, accessible genomic regions are enriched in regulatory elements important for gene activity while inaccessible regions restrict binding of transcriptional regulators resulting in gene silencing (Stergachis *et al.*, 2013). Assay for transposase accessible chromatin with high throughput sequencing (ATAC-seq) is a technique used to assess genome-wide chromatin accessibility. ATAC-seq works similarly as DNase-seq (DNase I hypersensitive sites with high-throughput sequencing) (Song & Crawford, 2010), and determines which genomic regions are accessible to Tn5 transposase (*i.e.* open chromatin regions), presumably the regulatory regions. Tn5 transposase inserts Illumina adapter sequences upon accessing the chromatin, which removes the need for additional steps to make the sequencing libraries later. This simple and efficient protocol reduces the starting material required, compared to DNase-seq. It also avoids many other steps such as the interaction with antibodies (*e.g.* ChIP-seq) or chemical treatment (*e.g.* FAIRE-seq, WGBS) that might introduce bias. Deep sequencing of the PCR amplified Tn5 accessible regions provides a high-resolution map of accessible chromatin regions in the genome. We reasoned that this technique can not only be used to establish functional links between chromatin structure and gene function, but also to quantify epigenetic diversity in populations. This would require

generation of ATAC-seq chromatin maps in single individuals. In addition, the technique should be sufficiently robust to be used by scientists who are experts in the field of population (epi)genetics and ecology, but having potentially received little training in molecular biology.

Here, we describe a streamlined and robust method for ATAC-seq of individuals of the crustacea *Daphnia pulex* and for the trematode *Schistosoma mansoni*. Our procedure is based on the protocol from Buenrostro *et al.* (2015); Corces *et al.* (2016) and Nextera DNA Library Preparation Kit (2017). Besides their ecological and epidemiological importance, both abovementioned organisms show high phenotypic plasticity in response to environmental cues (*e.g.* the presence of predator for *Daphnia*) or during their development (schistosomes). There is a rich literature that has documented the amazing property of *Daphnia* to modify their phenotypes at the morphological, physiological, behavioral and more recently at the molecular levels in response to a large panel of environmental stressors including diet, pollution, heavy metals, and predator kairomones (reviewed in (Harris *et al.*, 2012; Riessen, 1999)). Schistosomes also deal with a multitude of signals from the water environment as well as cues that come from their hosts, shaping morphology, metabolism, and infection success in the short-term and also their full development later in life (Augusto *et al.*, 2017; Augusto *et al.*, 2019; Roquis *et al.*, 2018). We and others have characterized many aspects of epigenetic mechanisms behind the phenotypic plasticity of schistosomes and their cross-talk with environmental cues. Epigenetics of *D. pulex* phenotype plasticity is still poorly understood. To validate the robustness of the method, we were experimenters with different levels of expertise in molecular biology to run the experimental procedure independently using *D. pulex* and *S. mansoni*. We show here that our procedure provides robust results with individual *D. pulex* and with single adult worms of *S. mansoni*, but other organisms of similar cell number can probably also be used.

Materials and methods

Animal sampling

A batch of ~300 commercial *Daphnia pulex* was obtained from a commercial supplier (Aqualiment: <http://www.aqualiment.eu/>). For schistosomes, fresh adult worms were collected from female Swiss OF1 mice (weight mean 18g) supplied by Charles River, L'Arbresle, France. Mice had been infected by peritoneal injection with 150 mixed sexes cercaria. Water and food were given ad libitum, 12h light/dark cycle, 25°C. Housing, feeding and animal care followed the national ethical standards established in the writ of 1 February 2013 (NOR: AGRG1238753A) setting the conditions for approval, planning and operation of establishments, breeders and suppliers of animals used for scientific purposes and controls. The French Ministère de l'Agriculture et de la Pêche and French Ministère de l'Éducation Nationale de la Recherche et de la Technologie provided permit A66040 to our laboratory for experiments on animals and certificate for animal experimentation (authorization 007083, decree 87-848) for the experimenters. Hepatic perfusions were performed with lethal injection of 1 mg per kg body weight of sodium pertobarbital

solution (Dolehal, Vetoquinol, Lure, France) after 65 days post infection. Living adult male worm was individually transferred to a 1.5 mL Eppendorf tube and immediately processed for ATAC-seq library preparation.

Environmental cues

At their arrival, *D. pulex* were immediately split into two sets of equal size (~ 150 × 2) and placed in two independent experimental tanks (*i.e.* initial density of 75 ind/L), hereafter called the ‘stress’ and the ‘control’ tanks. Each experimental tank consisted in a 2-L plastic aquaria (L × l × h = 18 × 12 × 11 cm) supplied with clean water, inside of which a floating plastic fish breeding isolation box (L × l × h = 12.5 × 8 × 7 cm) was placed. These isolation boxes are transparent with a series of 1 mm cracks on the bottom wall to allow water connection between the tanks and inside the isolation box.

D. pulex were acclimated in their respective experimental tanks out of the isolation box for 20 days prior to starting the experiment. This lag time before the experiment also allowed the production of new *D. pulex* offspring born in our experimental setup. During this acclimating period, only negligible mortality was observed and newly hatched *D. pulex* were observed in the two experimental tanks. After this 20-day acclimating period, a predator (*i.e.* a guppy fish previously trained to eat *D. pulex*) was introduced into the isolation box of one experimental tank during 15 days (*i.e.* hereafter called the ‘stress treatment’, compared to the ‘control treatment’) (Figure 1A). During the experiment the fish was fed every other day with 10 *D. pulex* collected alternatively from the stress and the control tank (i) to avoid subsequent biases in density between the experimental treatments and (ii) to account for a possible effect of *D. pulex* sampling on congeners’

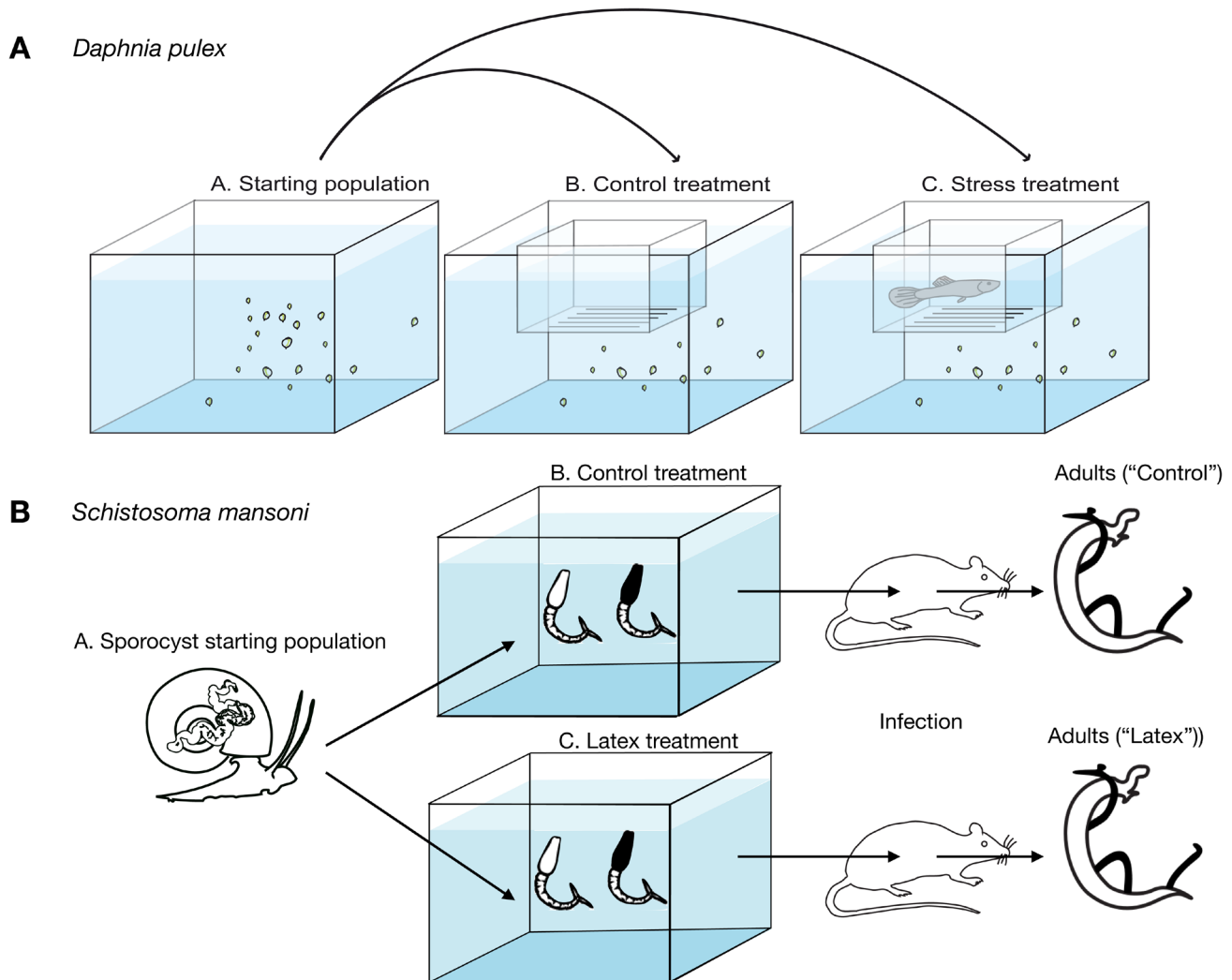


Figure 1. Schematic representation of experimental design. (A) *Daphnia* were put into a water tank and allowed to acclimate (start population). Then, two experimental tanks were set up following strictly the same design. The only difference was the presence of a predator (a guppy trained to eat daphnia) in the floating plastic fish breeding isolation box in the stress treatment. (B) *S.mansoni* infected snails were used to produce cercariae that were separated into two populations, one treated with Latex in well water, the other without treatment. After one hour cercariae were used to infect mice. Adult worms were recovered at 65 days post-infection by perfusion and used for ATAC-seq.

responses. *D. pulex* sampling for fish feeding was achieved using a sterile 3-ml plastic transfer pipet. This experimental setup allowed the *D. pulex* of the stress treatment to experience an indirect predation pressure (*i.e.* without predation risk) through a direct visual contact with the predator and an olfactory contact with environmental cues released by the predator. Over the experiment, the *D. pulex* and the predator were maintained at room temperature following the natural photoperiod and the former were fed ad libitum with clean phytoplankton (*i.e.* *Chlorella sp.*) reared in our lab facilities. Living *D. pulex* were sampled by pipetting through a 1 mL automatic pipette with enlarged openings of the pipetting tips. To avoid experimenter bias, 13 different persons sampled at least one individual each. Finally, each specimen was then individually transferred to a 1.5 mL Eppendorf tube and was immediately processed for ATAC-seq library preparation as follows. Controls were done without organisms as input.

For schistosomes, treatment of vertebrate infective larvae (cercariae) and recovery of adult worms was done as described in Augusto *et al.*, 2017; briefly, *E. milii* var. *hislopui* latex was collected at Ilha do Governador district (22°48'09''S/43°12'35''W), Rio de Janeiro, Brazil lyophilized at -52°C on 8×10^{-1} mBar for three 12-hour cycles in a Modulyo 4K Freeze Dryer with an acrylic chamber (Edwards High Vacuum Int., UK). The dose of the powdered lyophilized latex used to expose cercariae was 1.4 mg/L, described by Augusto *et al.*, 2017 as LC₅₀ for the intermediate host *Biomphalaria glabrata*. Cercariae were collected from infected host *B. glabrata* and split into two groups as follows: one group described as 'Control treatment' (Figure 1B) was kept in a tank of water for one hour while other group described as 'Latex treatment' was exposed to a solution of *E. milii* lyophilized latex in distilled water (1.4 mg/L), both for one hour. We infected 10 female mice (4 weeks-old Swiss-Webster mice, weight mean 18 g) with 150 exposed cercariae per mouse and another 10 mice were infected with 150 mock treated cercariae per mouse, all using standard percutaneous inoculation and mixed sexes. Finally, parasites couples were recovered at 65 days post-infection by perfusion. (Figure 1B). Males were manually separated from females and only male worms were used.

Counting of nuclei

Individual male *S. mansoni* worms and individual *D. pulex* were transferred into 1.5 ml Eppendorf tubes and all excess liquid was removed. Animals were resuspended in 20 – 100 µL of Nuclei EZ lysis buffer (Sigma N3408-200ml) and grinded with disposable polypropylene pestles. Two µL were applied on microscope glass slides and 2 µL ProLong Diamond Antifade mountant with DAPI (Invitrogen P36966) were added to stain nuclei. Nuclei in the total volume were counted under a Zeiss fluorescence microscope.

Transposase mixture

The necessary material is listed in Table 1 and Table 2 and must be prepared in advance. In addition, nuclease-free water, high fidelity DNA polymerase for PCR and corresponding buffers, freshly prepared 80% ethanol, refrigerated centrifuge,

Table 1. Externally sourced materials.

Item name	Vendor	Catalog ID
1% Molecular biology-grade IGEPAL CA-630	Sigma-Aldrich	I8896
2xTD (Tagment DNA buffer from Nextera kit)	Illumina	FC-121-1030
TDE1 (Tagment DNA Enzyme from Nextera kit)	Illumina	FC-121-1030
QIAquick PCR Purification Kit	Qiagen	28104
AMPure XP beads	Agencourt	A63880
Bioanalyzer High-Sensitivity DNA Analysis kit	Agilent	5067-4627
10,000X SYBR I	Invitrogen	S-7563

Table 2. Reagents produced in the laboratory.

Phosphate buffered saline (PBS)	137mM NaCl; 27mM KCl; 100mM Na ₂ HPO ₄ ; 18mM KH ₂ PO ₄
2× Tagmentation buffer (2× TD buffer)	20 mM Tris(hydroxymethyl)aminomethane; 10 mM MgCl ₂ ; 20% (vol/vol) dimethylformamide (Wang <i>et al.</i> , 2013)

0.2 ml PCR tubes, 1.5 ml tubes, ThermoMixer with agitation, PCR thermal cycler, qPCR instrument, magnetic rack, 1 mL pipette, 100 µL pipette, and 10 µL pipette are needed.

An Eppendorf ThermoMixer was then set with agitation to 37°C and the following steps performed.

- For *D. pulex* remove all water by pipetting with 100 µL tip;
- or
- Perfuse *S. mansoni* worms and take single worm as dry as possible with forceps
- Wash once with 50 µL of cold 1x PBS buffer and remove all supernatant by pipetting, being careful not to remove your sample;
- Add to each sample
 - 25 µL 2× TD buffer
 - 2.5 µL TDE1
 - 0.5 µL 1% IGEPAL
 - 22 µL Nuclease-free water

This gives 50 µL of transposase mixture for each sample. The samples are pipetted up and down 10 times to disrupt cells. In our hands, the addition of IGEPAL directly into the tagmentation reaction, and the agitation eliminated the need for a separate cell lysis step and streamlined the protocol.

Chromatin tagmentation

This step uses the Nextera Tn5 transposome to ‘tagment’ the chromatin, which is a process that fragments the chromatin and tags the DNA with adapter sequences in a single step.

- Tagmentation reactions are incubated at 37°C for 30 min in an Eppendorf ThermoMixer with agitation at 300 rpm.
- Tagmented chromatin is immediately purified using a QIAGEN MinElute Reaction Cleanup kit or a QIAquick PCR Purification Kit, and purified DNA is eluted into 20 µL of elution buffer (10 mM Tris-HCl, pH 8).

Library amplification

This step amplifies the tagmented DNA using a limited-cycle PCR program. PCR is carried out with a universal index

Ad1 and an index (barcode) primer Ad2, as described in [Table 3 \(Buenrostro *et al.*, 2015\)](#). Two library amplification methods were tested and validated in our hands as follows:

Option 1 (for Promega GoTag G2). Combine the following in a PCR tube for each sample: 9.5 µL Nuclease-free MilliQ water; 20 µL Purified transposed DNA; 10 µL 5x GoTag G2 buffer; 4 µL MgCl₂; 2.5 µL Universal Ad1_noMX primer (25 µM); 2.5 µL Specific Index primer Ad2.*, different for each sample (25 µM); 1 µL dNTPs (10 mM); 0.5µL GoTag G2.

Or

Option 2 (for NEB mix, more convenient but more expensive). Combine the following in a PCR tube for each sample: 20 µL purified transposed DNA; 2.5 µL Universal Ad1_noMX primer

Table 3. PCR Primer ID and sequence.

Index ID	Sequence
Ad1_noMX:	AATGATACGGCCACCACCGAGATCTACACTCGTCGGCAGCGTCAGATGTG
Ad2.1_TAAGGCGA	CAAGCAGAAGACGGCATAACGAGATTCGCCTTAGTCTCGTGGGCTCGGAGATGT
Ad2.2_CGTACTAG	CAAGCAGAAGACGGCATAACGAGATCTAGTACGGTCTCGTGGGCTCGGAGATGT
Ad2.3_AGGCAGAA	CAAGCAGAAGACGGCATAACGAGATTTCTGCCTGTCTCGTGGGCTCGGAGATGT
Ad2.4_TCCTGAGC	CAAGCAGAAGACGGCATAACGAGATGCTCAGGAGTCTCGTGGGCTCGGAGATGT
Ad2.5_GGACTCCT	CAAGCAGAAGACGGCATAACGAGATAGGAGTCCGTCTCGTGGGCTCGGAGATGT
Ad2.6_TAGGCATG	CAAGCAGAAGACGGCATAACGAGATCATGCCTAGTCTCGTGGGCTCGGAGATGT
Ad2.7_CTCTCTAC	CAAGCAGAAGACGGCATAACGAGATGTAGAGAGGTCTCGTGGGCTCGGAGATGT
Ad2.8_CAGAGAGG	CAAGCAGAAGACGGCATAACGAGATCCTCTCTGGTCTCGTGGGCTCGGAGATGT
Ad2.9_GCTACGCT	CAAGCAGAAGACGGCATAACGAGATAGCGTAGCGTCTCGTGGGCTCGGAGATGT
Ad2.10_CGAGGCTG	CAAGCAGAAGACGGCATAACGAGATCAGCCTCGGTCTCGTGGGCTCGGAGATGT
Ad2.11_AAGAGGCA	CAAGCAGAAGACGGCATAACGAGATTGCCTCTTGTCTCGTGGGCTCGGAGATGT
Ad2.12_GTAGAGGA	CAAGCAGAAGACGGCATAACGAGATTCCTCTACGTCTCGTGGGCTCGGAGATGT
Ad2.13_GTCGTGAT	CAAGCAGAAGACGGCATAACGAGATATCACGACGTCTCGTGGGCTCGGAGATGT
Ad2.14_ACCACTGT	CAAGCAGAAGACGGCATAACGAGATACAGTGGTGTCTCGTGGGCTCGGAGATGT
Ad2.15_TGGATCTG	CAAGCAGAAGACGGCATAACGAGATCAGATCCAGTCTCGTGGGCTCGGAGATGT
Ad2.16_CCGTTTTGT	CAAGCAGAAGACGGCATAACGAGATACAAACGGGTCTCGTGGGCTCGGAGATGT
Ad2.17_TGCTGGGT	CAAGCAGAAGACGGCATAACGAGATACCCAGCAGTCTCGTGGGCTCGGAGATGT
Ad2.18_GAGGGGTT	CAAGCAGAAGACGGCATAACGAGATAACCCCTCGTCTCGTGGGCTCGGAGATGT
Ad2.19_AGTTGGG	CAAGCAGAAGACGGCATAACGAGATCCCAACCTGTCTCGTGGGCTCGGAGATGT
Ad2.20_GTGTGGTG	CAAGCAGAAGACGGCATAACGAGATCACCACACGTCTCGTGGGCTCGGAGATGT
Ad2.21_TGGGTTTC	CAAGCAGAAGACGGCATAACGAGATGAAACCCAGTCTCGTGGGCTCGGAGATGT
Ad2.22_TGGTCACA	CAAGCAGAAGACGGCATAACGAGATTGTACCAGTCTCGTGGGCTCGGAGATGT
Ad2.23_TTGACCCT	CAAGCAGAAGACGGCATAACGAGATAGGGTCAAGTCTCGTGGGCTCGGAGATGT
Ad2.24_CCACTCCT	CAAGCAGAAGACGGCATAACGAGATAGGAGTGGGTCTCGTGGGCTCGGAGATGT

(25µM); 2.5 µL Specific Index primer Ad2.*, different for each sample (25µM); 25 µL NEBNext High-Fidelity 2X PCR Master Mix

In both options the final volume is 50 µL. The samples are pre-amplified using a PCR machine with the program described in [Table 4](#).

In order to reduce GC and size bias in the subsequent PCR, the PCR dynamics is monitored using qPCR to stop amplification prior to saturation. To run a qPCR side reaction, we combined the following depending on the option that had been chosen previously:

Option 1: 5 µl PCR product of the initial pre-amplification reaction (keep the remaining 45 µL at 4°C); 2.5 µl 5x GoTaq G2 buffer; 0.1 µL GoTaq 2; 3.14 µl Nuclease-free MilliQ water;

0.25 µL Universal Ad1_noMX primer (25 µM); 0.25 µL Ad2.* indexing primer (25 µM) ;1 µL MgCl₂; 0.25 µL dNTPs; 0.1 µL 100X SYBR I

or

Option 2: 5 µl PCR product of the initial pre-amplification reaction (keep the remaining 45 µL at 4°C); 4.41 µL Nuclease-free MilliQ water; 0.25 µL Ad1_noMX primer (25 µM); 0.25 µL Ad2.* indexing primer (25 µM); 0.09 µL 100X SYBR I; 5 µL NEBNext High-Fidelity 2X PCR MasterMix

The samples are amplified in a qPCR machine with the program set out in [Table 5](#).

To calculate the optimal additional number of cycles needed for the remaining 45 µL PCR, relative fluorescence is plotted against cycle number and the cycle number that corresponds to one-third of the maximum fluorescent intensity is determined ([Figure 2](#)). In our experience, the total number of amplification cycles must not exceed 21 ([Augusto et al., 2019](#)).

Table 4. PCR program for library pre-amplification.

Step	Temp	Duration	Cycles
Pre-Warming	72°C	5 min	1
Initial denaturation	98°C	30 sec	1
Denaturation	98°C	10 sec	5
Annealing	63°C	30 sec	
Extension	72°C	1 min	
HOLD	12°C	∞	1

Table 5. PCR program for library amplification.

Step	Temp	Duration	Cycles
Initial denaturation	98°C	30 sec	1
Denaturation	98°C	10 sec	20
Annealing	63°C	30 sec	
Extension	72°C	1 min	
HOLD	12°C	∞	1

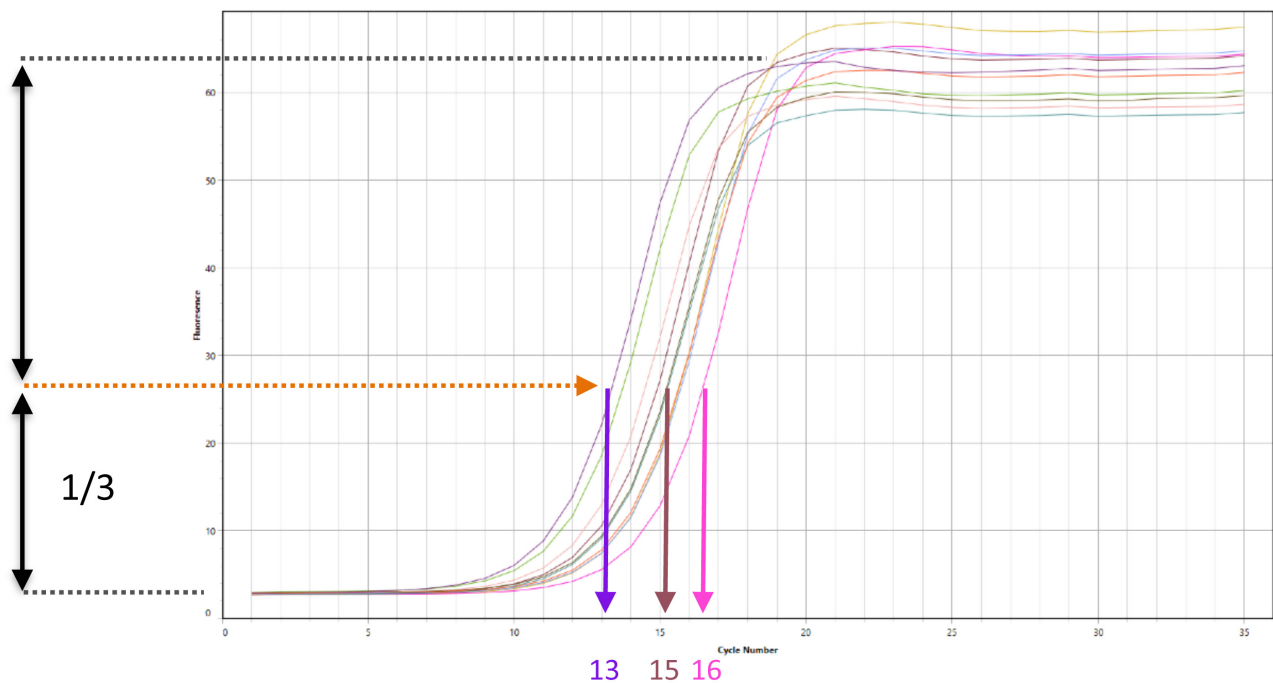


Figure 2. Example qPCR amplification profile. (X-axis) Number of PCR cycles. (Y-axis) Fluorescence intensity. One-third of the maximum fluorescent intensity is shown by the orange line and the optimal number of additional cycles to perform are indicated for three example ATAC-seq libraries.

The remaining 45 µL PCR reaction is run with the additional number of cycles and purified with a QIAGEN MinElute Reaction Cleanup kit or a QIAquick PCR Purification Kit, or similar, and eluted into a total of 45 µL of elution buffer (10 mM Tris-HCl, pH 8). Elution can be done in two rounds.

Fragments are separated by electrophoresis through a 1.5% agarose gel or on a Bioanalyzer chip. A ladder that corresponds to the nucleosome-free region and multiple nucleosome-size fragments should be seen (one nucleosome = about 150 bp). A single band at around 150 bp indicates sample degradation or over-fragmentation. Ideally, five bands should be obtained, three bands are acceptable (Figure 3A).

AMPure XP beads double-side purification

This step enriches for the nucleosome-free (~300 bp) as well as di and tri-nucleosome fragments. Removing small fragments (primer dimers) is important for optimal sequencing. First transfer 45 µL to an Eppendorf tube (or use PCR tube directly), add 22.5 µL (0.5X original volume, to remove large fragments) AMPure XP beads, pipet up and down 10 times to mix thoroughly. Incubate at room temperature for 10 minutes and place tubes in magnetic rack for 5 minutes. Transfer supernatant to new tube and add 58.5 µL (1.3X original volume, to remove small fragments) AMPure XP beads, pipet up and down 10 times to mix thoroughly. Incubate at room temperature for 10 minutes, place tubes in magnetic rack for 5 minutes and discard supernatant. Wash beads with 200 µL 80% ethanol (freshly made), pipet ethanol over beads 10 times, then discard ethanol. Ensure all ethanol is removed. Leave tube on magnetic rack with cap open for 3 to maximum 10 minutes depending on ambient humidity. The beads should be 'glowing' but not wet. Be careful not to over-dry them, which will decrease elution efficiency. Resuspend beads in 20 µL nuclease-free water, pipet up and down 10 times to mix thoroughly, place tube in magnetic rack for 1–5 minutes and transfer supernatant to new tube. This step can be replaced by Diagenode IP-Star, size selection 320 bp.

We have not systematically investigated if different purification procedures influence on the result. Purified libraries should be stored at -20°C and can be used for sequencing after up to 4 months.

Libraries check

Size profiling can be performed using an Agilent Bioanalyzer High Sensitivity DNA Assay. Expected profiles are shown in Figure 3B. Bioanalyzer profiles or KAPA library quantification kit were used to quantify libraries and proceed to sequencing. We present here data sequenced on a NextSeq550 High Output Flowcell as paired-end and 75 bp.

Detection of chromatin structure differences

Sequence quality was checked with FastQC (<http://www.bioinformatics.babraham.ac.uk/projects/fastqc/>). For *D. pulex*, reference genome was downloaded from ftp://ftp.ensemblgenomes.org/pub/metazoa/release-40/fasta/daphnia_pulex/dna/Daphnia_pulex.V1.0.dna.toplevel.fa.gz, corresponding to GenBank

assembly accession GCA_000187875.1. For *S. mansoni*, v5 reference genome was downloaded from <ftp://ftp.sanger.ac.uk/pub/pathogens/Schistosoma/mansoni/Archive/S.mansoni/genome/Assembly-v5/>. For both, alignment was done with Bowtie2 evoking the following parameters: `bowtie2-align-s basic-0 -p 6 -x genome -N 1 -L 32 -i S,1,1.15 --n-ceil L,0,0.15 --dpad 15 --gbar 4 --end-to-end --score-min L,-0.6,-0.6`. Uniquely aligned reads were retained by filtering the tag "XS:i:" that is absent in their alignment annotations.

For visualisation of ATAC profiles, all BAM files from *D. pulex* or *S. mansoni* were merged, converted to header-free SAM, and downsampled with a custom script that draws random lines to the condition with the lowest number of aligned reads (409,000 aligned reads for *D. pulex* and 15,000,000 reads for *S. mansoni*). For both, PCR duplicates were removed with SamTools RmDup. Bedgraph files were generated with MACS2 and/or ChromstaR, lower fold bound of 5, upper fold bound 50, band width 300 bp, minimum FDR for peak detection of 0.05 and without calling broad regions. Bedgraphs were loaded into IGV for visual inspection. For analysis of individual *D. pulex* or *S. mansoni*, background correction was done with MACS bkgcmp and linear scale fold enrichment (--method FE). Bedgraph was converted into BigWig. The DeepTools suite was used for representation of meta-gene profiles based on the forward strand for both organisms. For *Daphnia*, gene annotation files were downloaded from ftp://ftp.ensemblgenomes.org/pub/metazoa/release-40/fasta/daphnia_pulex/cds/Daphnia_pulex.V1.0.cds.all.fa.gz. More information is available at https://metazoa.ensembl.org/Daphnia_pulex/Info/Annotation/. For *S. mansoni*, gene annotation was downloaded from <ftp://ftp.sanger.ac.uk/pub/pathogens/Schistosoma/mansoni/Archive/S.mansoni/genome/Assembly-v5/> and modified to contain only genes and pseudogenes (`sma_v5.2_2015.01.06_genes_pseudogenes_rnas.gff3`). Two different approaches were used for further data analysis. One uses a combination of peakcalling with MACS2, extraction of read coverage in peaks with BEDtools intersect intervals with A-File the MACS peaks and B-File the uniquely aligned BAM, and DESeq2 for differential analysis. To detect all peak regions for all conditions, For *Daphnia*, BAM files of control and stress conditions were merged and peakcalling was performed with MACS2 as described above. The number of reads overlapping peak regions was extracted with bedtools intersect -a peakfile.bed -b individual_bam_files.bam -header -wa -c, Columns 4 and 11, corresponding to peak-names and number of overlapping features, *i.e.* coverage were used as input for DESeq2. All analyses were done at the galaxy instance of the Labex CeMEB/IHPE (<http://bioinfo.univ-perp.fr>).

The second approach was based on Hidden-Markov-Models (HMM) implemented in ChromstaR (v.1.2.0) for genome-wide characterization of open chromatin landscape. On this approach control and stress condition were processed in two steps: (1) we fitted a univariate HMM over each ATAC-seq samples individually and (2) we performed a multivariate HMM over the combined ATAC-seq samples in each condition. For that, BAM files were processed under the differential mode, with a false discovery rate (FDR) cutoff of 0.05 and bin size of 500.

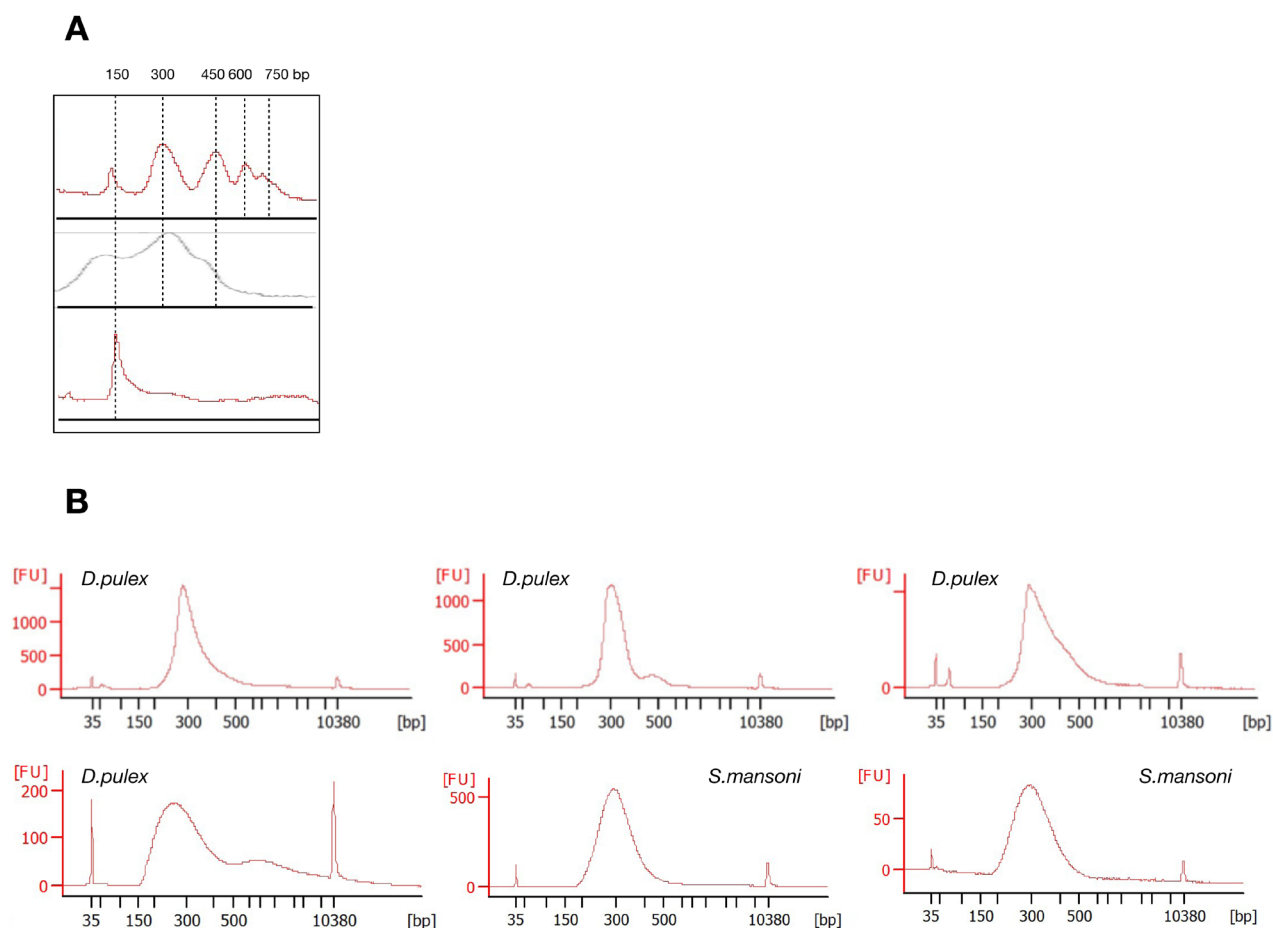


Figure 3. Examples of fragmentation profiles of ATAC-seq libraries before (**A**) and after size selection (**B**). X-axis: Base pairs. Y-axis: Fluorescence intensity. (**A**) Peaks correspond to nucleosome-free region, mono- to tetra-nucleosome fractions. Bottom lane: too strong fragmentation, thus Tn5 quantity needs to be decreased. (**B**) Examples of BioAnalyser profiles of ATAC-seq libraries after size selection. Fragment size should be between 150 and 800 bp. Peaks at 35 bp and 10380 bp are spiked-in marker peaks for the BioAnalyser.

Results

The method can be used by scientists with low expert level in molecular biology

The protocol described in the methods section was tested by 13 experimenters with molecular biology expert level ranging from untrained to over several 10 years of experience, or some who had retired from active wet-bench work several years ago. In only two cases ATAC-seq library production did not succeed.

ATAC-Seq can be used on individual *Daphnia* and individual *Schistosoma* adults

Our ATAC-seq procedure delivered reproducible chromatin profiles for individual *D. pulex* and adult *S. mansoni*. Projection of ATAC-seq reads on a metagene profile indicated that Tn5 accessible and thus presumably open chromatin structure occurs at the TSS and in gene bodies (Figure 4).

Individual daphnia contain 8,500–10,000 nuclei and adult male schistosomes 18,000 – 20,000 nuclei.

Exposure to predator cues leads to morphological differences in *Daphnia*

Our results show that on average, the (LL-SL)/SL ratio calculated for *D. pulex* from the stress treatment ($N = 14$; Mean = 0.24 ± 0.072) was significantly higher than that from the control treatment ($N = 12$; Mean = 0.15 ± 0.039 ; Mann-Whitney U Test, $U = 19$, $Z = -3.32$, $P < 0.001$) (Figure 5). This result confirms the expected induction of anti-predatory morphs in the stress treatment. It is noteworthy that the quantified morphological response to predation pressure observed in the stress treatment most likely reflects a more general response of stressed *D. pulex* including morphological, physiological and behavioural changes (Boersma *et al.*, 1999) Our first intention in comparing *D. pulex* from the two experimental

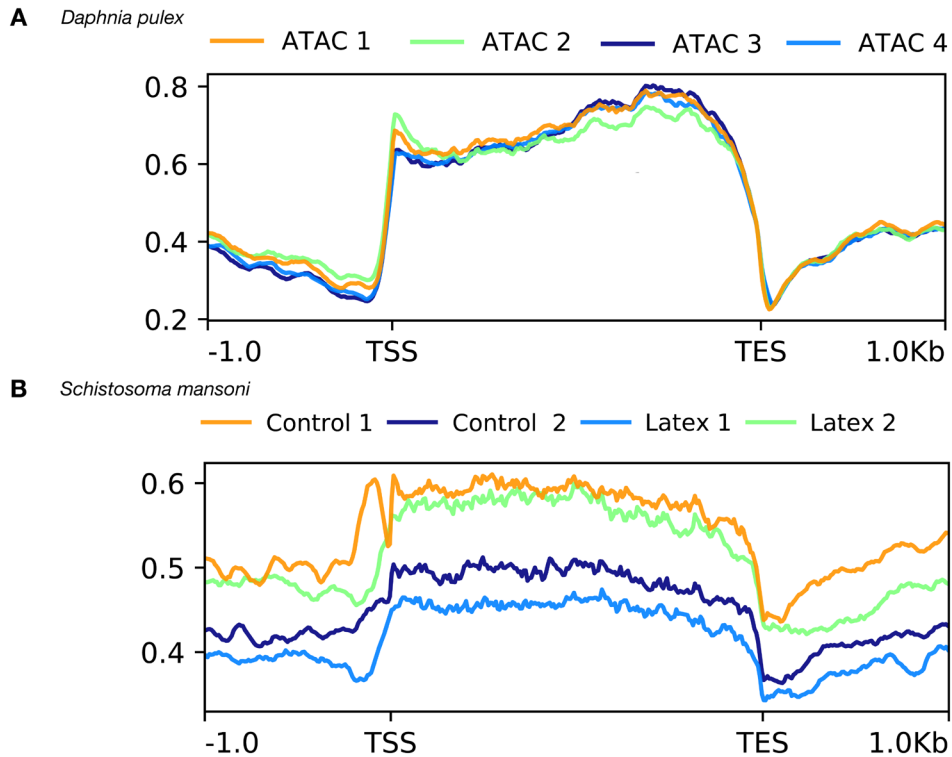


Figure 4. Superposed metagene ATAC profiles of four individuals after sequencing and analysis. X-axis in base-pairs. TSS = Transcription start site, TES = transcription end site. Y-axis average enrichment of ATAC-seq reads over genes and upstream and downstream regions. Enrichment of accessible chromatin occurs along the entire length of the genes. The metagene profiles are almost identical for *Daphnia* (A), while there is more heterogeneity of the profiles in *schistosomes* (B). Nevertheless, the profiles are in both cases very reproducible indicating the robustness of the ATAC-seq procedure.

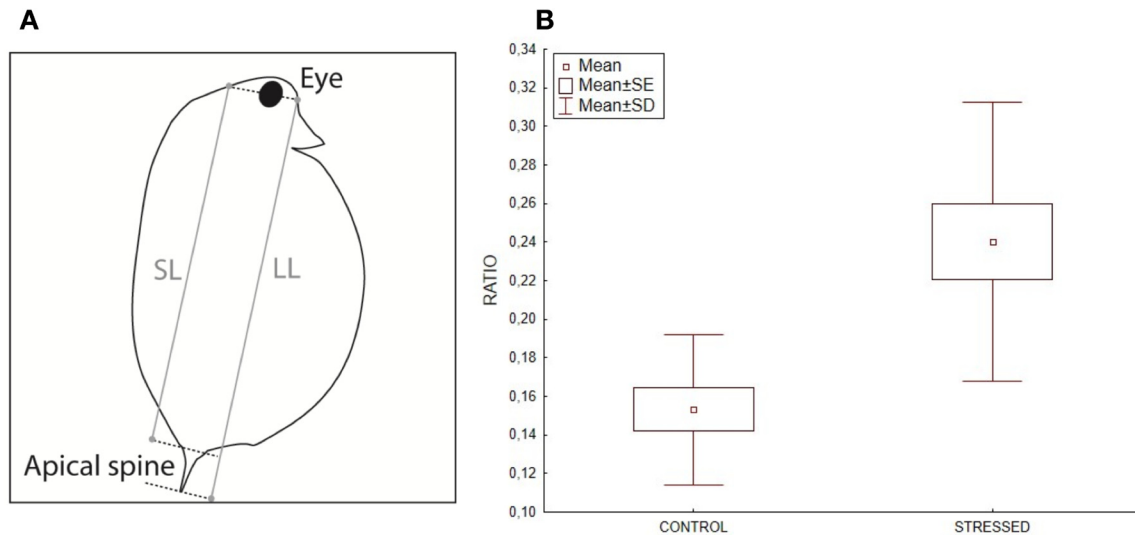


Figure 5. (A) Schematic representation of the measures taken on daphnia. SL = short length, LL = Long length. **(B)** Boxplot of morphometric ratios of (LL-SL)/SL in control and stressed *daphnia* populations (control: n = 12; stress: n = 14).

treatments was to confirm that we effectively induced a global response in stressed individuals, these responses having been otherwise much better documented previously (Riessen, 1999).

Exposure to predator cues leads to differences in chromatin structure between exposed (stressed) and unexposed (control) *Daphnia pulex*

Using the DESeq2 procedure described above for ‘start’ vs. ‘control’ we identified 66,194 differences between ‘control’ and ‘stressed’. This is by far too many, and indeed, shifts in MA plots (not shown) indicated that the assumption that is underlying the algorithm used in DESeq2 and the requires that most sites do not change, was violated. Metagene profiles, using the same number of aligned reads over the entire genome, lend further support to the finding that ‘stressed’ samples had on average fewer reads over genes than ‘control’ samples indicating major changes in chromatin structure (Figure 6).

This also means that there is a large number of regions for which no reads could be recovered in the stressed samples. This is not due to a general lower accessibility of Tn5 to the cells and nuclei because of a thicker cuticle or a similar phenotypic trait because the insert size distribution of start, control and stressed populations are similar (Supplementary file 1). If DNA was more inaccessible in the stressed population we would expect longer fragments. To cope with the general decrease of ATAC-Seq reads in the stressed population, we resorted to ChromstaR, a HMM based software that was developed for ChIP-Seq analysis but that in principle can also be used for ATAC-Seq and is probably less sensitive to zero values. Under the constraints of numerous instances of an ‘absence of data’ (Tn5 inaccessible), ChromstaR identified 87 regions that are different between start and control, and stress. All were visually inspected using MACS2 average profiles, normalised by the same number of aligned reads over the genome. Among these 87 regions, ATAC signal was down in stressed samples compared to ‘control and start’ in 45 regions (52%), down in ‘stress and control’ compared to ‘start’ in 16 (18%), up in ‘stress

and control’ in 3 (3.4%), and down in ‘control’ in only 1 (1.1%). Seven regions showed a heterogenous pattern on ATAC signals. In 15 regions differences were considered too weak (17%) suggesting that fine tuning of ChromstaR parameters might be necessary in the future. These results are in line with a general decrease in ATAC signal in the stressed samples, *i.e.* chromatin becomes less accessible and/or less heterogenous. It is interesting to note that for 20 regions adjacent ATAC signals (less than 2kb apart) were detected, lending further support to the idea that chromatin structure changes occur in a controlled fashion. Clustering of the samples clearly regroups control and stressed samples (Figure 7).

Exposure to Latex leads to differences in chromatin structure between schistosoma adults that developed from exposed (stressed) and unexposed (control) cercaria

With DESeq2 we found 296 differences between schistosoma adults that developed from latex exposed cercaria and controls with adjusted p-value ≤ 0.05 . MA plots were symmetric around 0 (Figure 8A), and PCA plots (Figure 8B) indicated clear segregation of both sample groups. We used in this small study only four worms to demonstrate the feasibility of the method.

Discussion

Phenotypically, plasticity plays an important role in development and evolution. The relative contribution of genetic and epigenetic components to heritable plasticity is a matter of lively scientific debate (Hu & Barrett, 2017; Roquis *et al.*, 2018). One of the caveats of analyzing epigenetic information is that it is stored in several, very different bearers of information (*e.g.* DNA methylation, modification of histones, non-coding RNA and topological position in the interphase nucleus). Nevertheless, these types of information converge towards a change in chromatin structure which can be approximated by DNA accessibility. We reasoned that a straightforward ATAC-seq method to map the chromatin accessibility

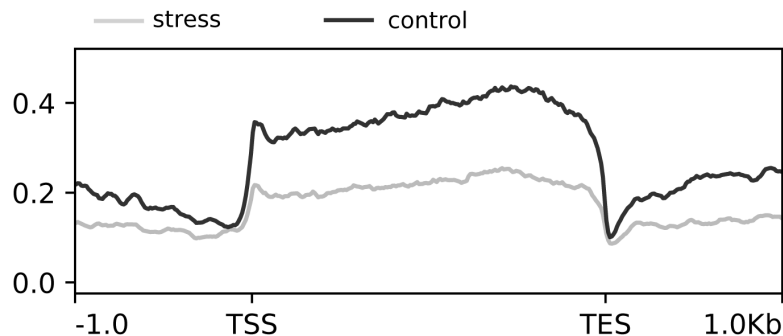


Figure 6. Combined metagene ATAC profiles of stressed and control *daphnia* populations. X-axis in base-pairs. TSS = Transcription start site, TES = transcription end site. Y-axis average enrichment of ATAC-seq reads over genes and upstream and downstream regions.

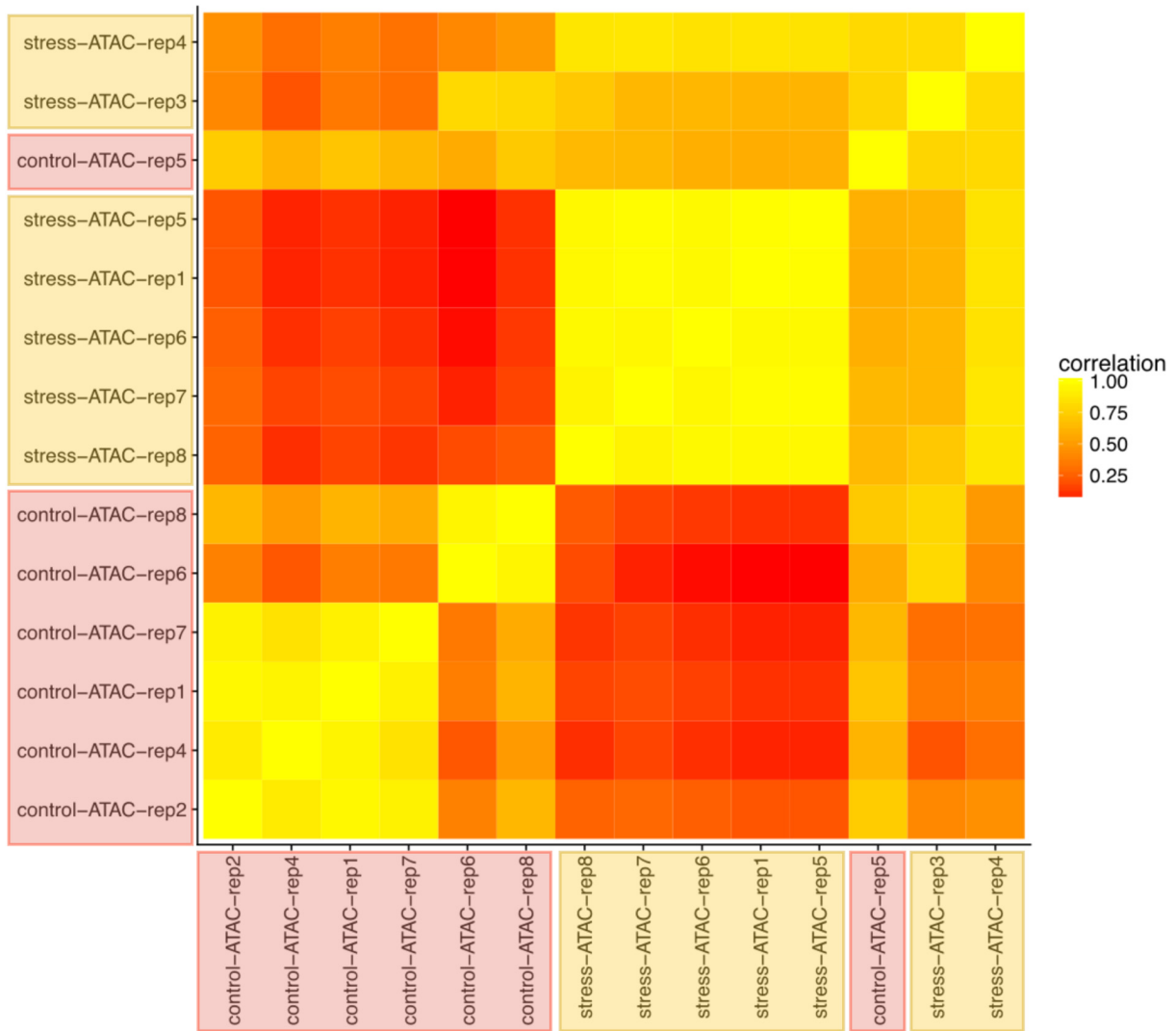


Figure 7. Clustering of individual *daphnia* based on their ATAC-seq profiles. Heat map indicating similarity in the HMM Chromstar results. Generally, samples from the stressed and the control populations each cluster together.

status in populations with high phenotypic plasticity would facilitate further investigations of the role of epigenetics in plasticity. This study field is also of particular importance to field ecologists. We therefore set-out to establish a robust, easy to use protocol that can be used with little molecular biology training. Our protocol was successfully used in the framework of a summer school 'Epigénétique en Ecologie et Evolution' by participants with different levels of expertise in molecular

biology using *D. pulex*. We also used single adult *S. mansoni* worms as biological material in a small pilot study. We believe that our protocol is suitable for fast epigenotyping of other organisms as well. From our experience, the only parameter that might be necessary to optimize is Tn5 to chromatin ratio if over- or under-fragmentation occurs. A potential issue is contamination with microorganisms whose DNA might be present in the libraries.

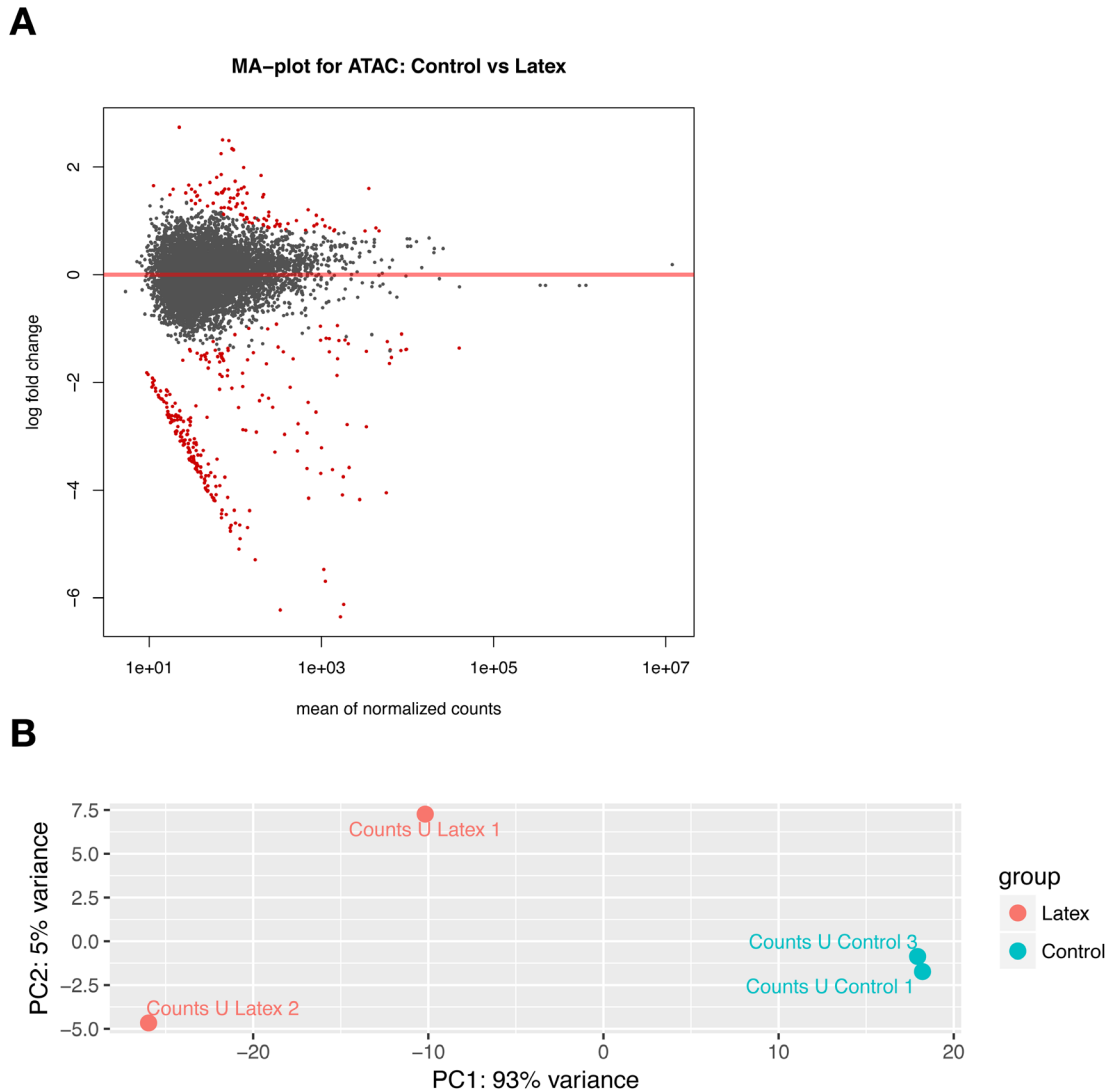


Figure 8. (A) MA-Plot and (B) Principal component analysis of individual *schistosoma* based on their ATAC-seq profiles. MA-plots are symmetric. Red dots indicate significantly different ATAC regions in control vs “Latex” population. On the PCA every point represents an individual male adult *schistosoma*. Populations are colour coded. Samples from the control (blue) and “Latex” population (red) are well separated.

Data availability

Protocols.io “A simple ATAC-seq protocol for population epigenetics”

<https://dx.doi.org/10.17504/protocols.io.bae6ibhe> (Augusto *et al.*, 2019).

A step-by-step protocol for the ATAC-seq procedure

Zenodo: Supporting data for “A simple ATAC-seq protocol for population epigenetics”. <http://doi.org/10.5281/zenodo.3828600> (Augusto *et al.*, 2020).

This project contains the following underlying data:

- Agarose picture (TIF). (Example of electrophoresis fragment separation.)
- Agarose profile (PNG) (Example of fragment separation on a BioAnalyser chip.)
- BioAnalyser, BioAnalyser 2–4 (PDF). (BioAnalyser profiles generated in this study.)
- qPCR cycles (XLSX). (Quantification of qPCR cycles for each daphnia.)
- qPCR plot (JPG). (qPCR amplification cycles plot.)

NCBI SRA:

<https://www.ncbi.nlm.nih.gov/bioproject/587385>

BioProject Accession [PRJNA587385](https://www.ncbi.nlm.nih.gov/bioproject/587385)

Data are available under the terms of the Creative Commons Attribution 4.0 International license (CC-BY 4.0).

Acknowledgments

We thank J.F. Allienne at the Bio-environment platform (University Perpignan Via Domitia) for support in NGS library preparation and sequencing, and the Environmental Epigenomics platform for support with ATAC-Seq procedure. This study is set within the framework of the “Laboratoires d’Excellences (LABEX)” TULIP (ANR-10-LABX-41).

References

- Augusto RC, Tetreau G, Chan P, *et al.*: **Double impact: natural molluscicide for schistosomiasis vector control also impedes development of *Schistosoma mansoni* cercariae into adult parasites.** *PLoS Negl Trop Dis.* 2017; **11**(7): e0005789.
[PubMed Abstract](#) | [Publisher Full Text](#) | [Free Full Text](#)
- Augusto RC, Duval D, Grunau C: **Effects of the Environment on Developmental Plasticity and Infection Success of *Schistosoma* Parasites – An Epigenetic Perspective.** *Front Microbiol.* 2019; **10**: 1475.
[PubMed Abstract](#) | [Publisher Full Text](#) | [Free Full Text](#)
- Augusto RC, Minoda A, Grunau C: **Supporting data for “A simple ATAC-seq protocol for population epigenetics” (Version 1) [Data set].** *Zenodo.* 2020. <http://www.doi.org/10.5281/zenodo.3828600>
- Boersma M, De Meester L, Spaak P: **Environmental stress and local adaptation in *Daphnia magna*.** *Limnol Oceanogr.* 1999; **44**(2): 393–402.
[Publisher Full Text](#)
- Buenrostro JD, Wu B, Chang HY, *et al.*: **ATAC-seq: A Method for Assaying Chromatin Accessibility Genome-Wide.** *Curr Protoc Mol Biol.* 2015; **109**: 21.29.1–21.29.9.
[PubMed Abstract](#) | [Publisher Full Text](#) | [Free Full Text](#)
- Chen T, Dent SY: **Chromatin modifiers and remodellers: regulators of cellular differentiation.** *Nat Rev Genet.* 2014; **15**(2): 93–106.
[PubMed Abstract](#) | [Publisher Full Text](#) | [Free Full Text](#)
- Corces MR, Buenrostro JD, Wu B, *et al.*: **Lineage-specific and single-cell chromatin accessibility charts human hematopoiesis and leukemia evolution.** *Nat Genet.* 2016; **48**(10): 1193–203.
[PubMed Abstract](#) | [Publisher Full Text](#) | [Free Full Text](#)
- Harris KD, Bartlett NJ, Lloyd VK: ***Daphnia* as an emerging epigenetic model organism.** *Genet Res Int.* 2012; **2012**: 147892.
[PubMed Abstract](#) | [Publisher Full Text](#) | [Free Full Text](#)
- Hawes NA, Fidler AE, Tremblay LA, *et al.*: **Understanding the role of DNA methylation in successful biological invasions: a review.** *Biol Invasions.* 2018; **20**: 2285–2300.
[Publisher Full Text](#)
- Hu J, Barrett RDH: **Epigenetics in natural animal populations.** *J Evol Biol.* 2017; **30**(9): 1612–1632.
[PubMed Abstract](#) | [Publisher Full Text](#)
- Nextera XT DNA Library Prep Kit - Reference Guide.
[Reference Source](#)
- Riessen H: **Predator-induced life history shifts in *Daphnia*: A synthesis of studies using meta-analysis.** *Can J Fish Aquat Sci.* 1999; **56**(12): 2487–2494.
[Publisher Full Text](#)
- Roquis D, Taudt A, Geyer KK, *et al.*: **Histone methylation changes are required for life cycle progression in the human parasite *Schistosoma mansoni*.** *PLoS Pathog.* 2018; **14**(5): e1007066.
[PubMed Abstract](#) | [Publisher Full Text](#) | [Free Full Text](#)
- Shi W, Chen X, Gao L, *et al.*: **Transient Stability of Epigenetic Population Differentiation in a Clonal Invader.** *Front Plant Sci.* 2019; **9**: 1851.
[PubMed Abstract](#) | [Publisher Full Text](#) | [Free Full Text](#)
- Song L, Crawford GE: **DNase-seq: a high-resolution technique for mapping active gene regulatory elements across the genome from mammalian cells.** *Cold Spring Harb Protoc.* 2010; **2010**(2): pdb.prot5384.
[PubMed Abstract](#) | [Publisher Full Text](#) | [Free Full Text](#)
- Stergachis AB, Neph S, Reynolds A, *et al.*: **Developmental fate and cellular maturity encoded in human regulatory DNA landscapes.** *Cell.* 2013; **154**(4): 888–903.
[PubMed Abstract](#) | [Publisher Full Text](#) | [Free Full Text](#)
- Wang Q, Gu L, Adey A, *et al.*: **Tagmentation-based whole-genome bisulfite sequencing.** *Nat Protoc.* 2013; **8**(10): 2022–2032.
[PubMed Abstract](#) | [Publisher Full Text](#)
- Zhang YY, Latzel V, Fischer M, *et al.*: **Understanding the evolutionary potential of epigenetic variation: a comparison of heritable phenotypic variation in epiRILs, RILs, and natural ecotypes of *Arabidopsis thaliana*.** *Heredity (Edinb).* 2018; **121**(3): 257–265.
[PubMed Abstract](#) | [Publisher Full Text](#) | [Free Full Text](#)

Open Peer Review

Current Peer Review Status:  

Version 2

Reviewer Report 18 January 2021

<https://doi.org/10.21956/wellcomeopenres.18116.r42038>

© 2021 Bantignies F. This is an open access peer review report distributed under the terms of the [Creative Commons Attribution License](#), which permits unrestricted use, distribution, and reproduction in any medium, provided the original work is properly cited.



Frédéric Bantignies 

Institute of Human Genetics, CNRS, University of Montpellier, Montpellier, France

This new version has been strongly revised. The authors have largely improved their initial manuscript, addressing all my concerns.

This protocol, that will be useful for population epigenomic studies, is therefore ready for indexing.

Competing Interests: No competing interests were disclosed.

Reviewer Expertise: Genetic and epigenetic, chromatin structure and organization.

I confirm that I have read this submission and believe that I have an appropriate level of expertise to confirm that it is of an acceptable scientific standard.

Reviewer Report 11 January 2021

<https://doi.org/10.21956/wellcomeopenres.18116.r42037>

© 2021 Santos-Pereira J. This is an open access peer review report distributed under the terms of the [Creative Commons Attribution License](#), which permits unrestricted use, distribution, and reproduction in any medium, provided the original work is properly cited.



José María Santos-Pereira 

Andalusian Center for Development Biology (CABD), Spanish National Research Council, Pablo de Olavide University, Seville, Spain

The authors have successfully addressed my previous concerns and notably improved their manuscript. Therefore, I find it ready for indexing.

Competing Interests: No competing interests were disclosed.

Reviewer Expertise: Chromatin structure, developmental biology, functional genomics.

I confirm that I have read this submission and believe that I have an appropriate level of expertise to confirm that it is of an acceptable scientific standard.

Version 1

Reviewer Report 17 August 2020

<https://doi.org/10.21956/wellcomeopenres.17031.r39929>

© 2020 Santos-Pereira J. This is an open access peer review report distributed under the terms of the [Creative Commons Attribution License](#), which permits unrestricted use, distribution, and reproduction in any medium, provided the original work is properly cited.



José María Santos-Pereira 

Andalusian Center for Development Biology (CABD), Spanish National Research Council, Pablo de Olavide University, Seville, Spain

In this protocol article, Augusto and colleagues describe a version of the popular ATAC-seq method for chromatin accessibility profiling in the invertebrate organisms *Daphnia pulex* and *Schistosoma mansoni*. Their main claim is that this protocol can be used by researchers with little molecular biology training. However, only the wet-lab component of the ATAC-seq experiment is covered by the manuscript, while the computational analysis of the obtained sequences is omitted. I think that this is a major limitation that has to be addressed before indexing (please, see below).

Major points:

- Using Tn5 transposase with the appropriate number of cells is critical for this protocol. Authors mention that TAGmentation time should be reduced in case that libraries are over-TAGmented. However, they do not mention the cell numbers used with these organisms, nor the number of *Schistosoma* individuals. This is important to be clearly explained in the manuscript.
- The authors claim that this protocol produces robust results. However, the results are not shown at all. A complete ATAC-seq protocol should cover from the sample preparation in the lab to the analysis of the generated results. I think this is a major limitation of this article and that the authors should explain, at least, the primary computational analysis of the data, the performed quality controls and examples of data visualization. An example of basic analysis of the data, such as peak calling and motif enrichment analysis in the called peaks would be much more helpful to understand how this technique may help to study epigenetic diversity at the population level. Of course, these data have to be available for the community, for example by a GEO accession code.

Minor points:

- The origin of the *Daphnia* samples is not explained.
- While I assume that the use of 1% Igepal in the TAGmentation reaction is what lyses the samples, this has to be stated more clearly, since usually cell lysis is performed before TAGmentation in other ATAC-seq protocols.
- The Promega GoTaq G2 polymerase is not a high-fidelity enzyme and therefore I would not recommend its use for this purpose, since this could result in mutations in the amplified molecules and decreased alignment efficiency to the reference genome. Have the authors noted this when analyzing their data in comparison with NEB Next?
- How was the quality of the results obtained by the 13 volunteers? If this protocol can be performed by researchers with little molecular biology training, then the authors should show that the experiments performed by their volunteers were of enough quality to be used.
- The agarose gel showed in the supporting material has no lane labels, so it cannot be known what is shown. It would be helpful to show pictures of the agarose gels underlying Fig. 2 data in the main figure.

Is the rationale for developing the new method (or application) clearly explained?

Yes

Is the description of the method technically sound?

Partly

Are sufficient details provided to allow replication of the method development and its use by others?

Partly

If any results are presented, are all the source data underlying the results available to ensure full reproducibility?

No

Are the conclusions about the method and its performance adequately supported by the findings presented in the article?

No

Competing Interests: No competing interests were disclosed.

Reviewer Expertise: Chromatin structure, developmental biology, functional genomics.

I confirm that I have read this submission and believe that I have an appropriate level of expertise to confirm that it is of an acceptable scientific standard, however I have significant reservations, as outlined above.

Author Response 18 Nov 2020

Christoph Grunau, Univ. Perpignan Via Domitia, IHPE UMR 5244, CNRS, IFREMER, Univ. Montpellier, Perpignan, France

1- In this protocol article, Augusto and colleagues describe a version of the popular ATAC-seq method for chromatin accessibility profiling in the invertebrate organisms *Daphnia pulex* and *Schistosoma mansoni*. Their main claim is that this protocol can be used by researchers with little molecular biology training. However, only the wet-lab component of the ATAC-seq experiment is covered by the manuscript, while the computational analysis of the obtained sequences is omitted. I think that this is a major limitation that has to be addressed before indexing (please, see below).

It was our initial intention to show the robustness of the wet-bench part. The computational analysis of the obtained sequences is now also provided.

Major points:

2- Using Tn5 transposase with the appropriate number of cells is critical for this protocol. Authors mention that TAGmentation time should be reduced in case that libraries are over-TAGmented. However, they do not mention the cell numbers used with these organisms, nor the number of *Schistosoma* individuals. This is important to be clearly explained in the manuscript.

A sentence describing the number of Schistosoma individuals was added at the animal sampling and transposase mixture section. Number of nuclei were counted and added to the results section, paragraph "ATAC-Seq can be used on individual Daphnia and individual Schistosoma adults"

3- The authors claim that this protocol produces robust results. However, the results are not shown at all. A complete ATAC-seq protocol should cover from the sample preparation in the lab to the analysis of the generated results. I think this is a major limitation of this article and that the authors should explain, at least, the primary computational analysis of the data, the performed quality controls and examples of data visualization. An example of basic analysis of the data, such as peak calling and motif enrichment analysis in the called peaks would be much more helpful to understand how this technique may help to study epigenetic diversity at the population level. Of course, these data have to be available for the community, for example by a GEO accession code

We have added a data analysis section and two examples of population epigenetics study to show the feasibility.

The following sentence was added to the Data availability section: This article contains supporting information online on NCBI SRA (BioProject [PRJNA587385](#)).

Minor points

4-The origin of the *Daphnia* samples is not explained

This is now in the Animal sampling part.

5- While I assume that the use of 1% Igepal in the TAGmentation reaction is what lyses the samples, this has to be stated more clearly, since usually cell lysis is performed before TAGmentation in other ATAC-seq protocols.

We understand the reviewer's concern. When AM, RCA and CG optimized the method we realized that adding IGEPAL directly into the tagmentation reaction did not alter the outcome and that it streamlined the protocol and made it more straightforward.

6- The Promega GoTaq G2 polymerase is not a high-fidelity enzyme and therefore I would not

recommend its use for this purpose, since this could result in mutations in the amplified molecules and decreased alignment efficiency to the reference genome. Have the authors noted this when analyzing their data in comparison with NEB Next?

We did not observe differences between both polymerases following our pipeline. GoTaq is cheaper and that could be an advantage when large number of libraries must be prepared.

7- How was the quality of the results obtained by the 13 volunteers? If this protocol can be performed by researchers with little molecular biology training, then the authors should show that the experiments performed by their volunteers were of enough quality to be used.

As indicated "The protocol described in the methods section was tested by 13 experimenters with molecular biology expert level ranging from untrained to over several 10 years of experience, or some who had retired from active wet-bench work several years ago. In only two cases ATAC-seq library production did not succeed." We also added the Figure 7 which shows the clustering of individual *daphnia* based on their ATAC-Seq profiles.

8- The agarose gel showed in the supporting material has no lane labels, so it cannot be known what is shown. It would be helpful to show pictures of the agarose gels underlying Fig. 2 data in the main figure.

It is our understanding that the supporting data show the raw files. In the Zenode description was added: "In "Agarose picture.Tif" the left lane shows the 100 bp size marker, first 10 bands from down to top: 100bp, 200bp, 300bp, 400bp, 500bp, 600bp, 700bp, 800bp, 900bp and 1kbp."

Competing Interests: No competing interest.

Reviewer Report 21 July 2020

<https://doi.org/10.21956/wellcomeopenres.17031.r38998>

© 2020 Bantignies F. This is an open access peer review report distributed under the terms of the [Creative Commons Attribution License](#), which permits unrestricted use, distribution, and reproduction in any medium, provided the original work is properly cited.

? Frédéric Bantignies 

Institute of Human Genetics, CNRS, University of Montpellier, Montpellier, France

The authors describe here a simple ATAC-seq protocol for its use in population epigenetics. ATAC-seq is now a common molecular biology technique used to assess chromatin accessibility in nuclei of culture cells or tissues. The authors have adapted this technique to small non-model organisms, which could be a way to determine epigenetic variation/signatures possibly associated with phenotypic variance in animal populations. Although this protocol seems really straightforward and useful for the community (even for non-molecular biologist), several points need to be clarified before its indexing.

Major points:

- Would be nice to have an estimation of the size and cell number in both *S.mansoni* and *D.pulex* specimens. This could be important to further adapt this protocol with other organisms of similar size, smaller or larger.
- There is no mention of nuclei isolation or tissue treatment before Transposase treatment. Maybe worth to mention if such steps are needed or not with these organisms, and why.
- There is no mention at all of the sequencing part per se of this ATAC-seq protocol. The protocol closes with "library check". A paragraph should be added to present the sequencing part of this ATAC-seq protocol. In particular, mention if *D.pulex* and *S.mansoni* genomes are well annotated and/or mention if alternative procedure can be used for sequence data analysis in these cases.
- What would have been very interesting is to provide an illustration that this technique is indeed suitable to quantify epigenetic diversity in populations. For instance, it would have been nice to have examples of a genome browser display emanating from their multiple ATAC-seq libraries in *D.pulex* and/or *S.mansoni*. Maybe, the authors could also refer to some published or ongoing work.

Minor points:

- Page 2/Introduction: when mentioning "*ATAC-seq uses the Tn5 transposase, which fragments DNA and adds adapters simultaneously in open chromatin regions (that are accessible to Tn5 transposase)*", the author should further precise where the transposase is cutting the DNA, i.e. in open chromatin, on both sides of nucleosomes and in larger nucleosome free-regions... This would also help to interpret Figure 2 and 3.
- Page 2/Introduction: when mentioning "*Besides their ecological and epidemiological importance, both abovementioned organisms show high phenotypic plasticity in response to environmental cues (e.g. the presence of predator for daphnia) or during their development (schistosoma)*". For non-ecology specialists, the authors should elaborate a bit more on that, or at least cite references illustrating this intriguing abovementioned phenotypic plasticity in line with associated epigenetic changes.
- Page 2/Introduction/end of the paragraph: I would move "*Controls must be done without organisms as input*" in the Mat&Met/transposase mixture section.
- Page 2/ Mat&Met: I would separate "Animal sampling" and "transposase mixture" sections.

- Page 2/Table2/Reagents produced in the laboratory: I would recommend using commercially available PBS1X, and not sure why another Tagmentation (TD) buffer is indicated here. Usually, the TD buffer is directly provided with the enzyme (as indicated in Table 1). If so, Table 2 is not needed.
- Page 4/Figure1 could be a bit more explicit. At least indicate on the graph the one-third of the maximum fluorescent intensity to determine the additional PCR cycles.
- Page 4/AMPure XP beads double-side purification: *"This step enriches for the nucleosome-free (~300 bp)"* ... *"regions as well as di and tri-nucleosome fragments"*. Maybe more correct like this. This specific point could be also mentioned in the Figure 3 legend.
- Also mentioned: *"First transfer 45 ul to an Eppendorf tube (or use PCR tube directly)"*. After the additional PCR cycles and purification, DNA should be in 20 ul elution buffer. Need to be corrected or clarified for consistency in the following of the protocol.
- Page 5/Results: Most data are also presented via a [zenodo interface](#). However, the legends and labels of these figures are not always explicit, and the correspondence with the actual figures of the protocol is not always intuitive, something that could be readily improved.
- Page 6/Figure 3: the figure is showing fragment sizing. All profiles are rather homogeneous, except one, D. Pulex/bottom-left, with two clear peaks, one of small fragments in the range of 35 bp (probably the primers), one of large fragments in the range of 10 kb. As they did for Figure 2, the authors should comment on that and propose an alternative solution when this particular situation is encountered, i.e. needs further purification or it is acceptable to process.

Is the rationale for developing the new method (or application) clearly explained?

Partly

Is the description of the method technically sound?

Yes

Are sufficient details provided to allow replication of the method development and its use by others?

Partly

If any results are presented, are all the source data underlying the results available to ensure full reproducibility?

Yes

Are the conclusions about the method and its performance adequately supported by the findings presented in the article?

Partly

Competing Interests: No competing interests were disclosed.

Reviewer Expertise: Genetic and epigenetic, chromatin structure and organization.

I confirm that I have read this submission and believe that I have an appropriate level of expertise to confirm that it is of an acceptable scientific standard, however I have significant reservations, as outlined above.

Author Response 18 Nov 2020

Christoph Grunau, Univ. Perpignan Via Domitia, IHPE UMR 5244, CNRS, IFREMER, Univ. Montpellier, Perpignan, France

Major points:

1- Would be nice to have an estimation of the size and cell number in both *S.mansoni* and *D.pulex* specimens. This could be important to further adapt this protocol with other organisms of similar size, smaller or larger

The number of nuclei were counted in daphnia and schistosoma worms.

2- There is no mention of nuclei isolation or tissue treatment before Transposase treatment. Maybe worth to mention if such steps are needed or not with these organisms, and why
We appreciate the reviewer's concern. This was one of the streamlining steps and in our hands no nuclei isolation was necessary. We tested both approaches. Maybe the small size of the organisms play a role.

3- There is no mention at all of the sequencing part per se of this ATAC-seq protocol. The protocol closes with "library check". A paragraph should be added to present the sequencing part of this ATAC-seq protocol. In particular, mention if *D.pulex* and *S.mansoni* genomes are well annotated and/or mention if alternative procedure can be used for sequence data analysis in these cases.

The sequencing and analysis parts were added.

4- What would have been very interesting is to provide an illustration that this technique is indeed suitable to quantify epigenetic diversity in populations. For instance, it would have been nice to have examples of a genome browser display emanating from their multiple ATAC-seq libraries in *D.pulex* and/or *S.mansoni*. Maybe, the authors could also refer to some published or ongoing work.

We have added the description of the population epigenetics part. We agree that IGV visualisation is definitely useful to get an impression of the data especially in relation to genome annotations. However, we feel that the display is not so useful for the population studies. It was not our intention to use this method to infer any functional relationships between chromatin structure and e.g. gene expression.

Minor points:

5- Page 2/Introduction: when mentioning "ATAC-seq uses the *Tn5* transposase, which fragments

DNA and adds adapters simultaneously in open chromatin regions (that are accessible to *Tn5* transposase)", the author should further precise where the transposase is cutting the DNA, i.e. in open chromatin, on both sides of nucleosomes and in larger nucleosome free

regions...

This would also help to interpret Figure 2 and 3

We modified the sentence as follow: "ATAC-seq works similarly as DNase-seq (DNase I hypersensitive sites with high-throughput sequencing) (Song & Crawford 2010), and determines which genomic regions are accessible to Tn5 transposase (i.e. open chromatin regions), presumably the regulatory regions. Tn5 transposase inserts Illumina adapter sequences upon accessing the chromatin, which removes the need for additional steps to make the sequencing libraries later. This simple and efficient protocol reduces the starting material required, compared to DNase-seq. It also avoids many other steps such as the interaction with antibodies (e.g. ChIP-seq) or chemical treatment (e.g. FAIRE-seq, WGBS) that might introduce bias."

6- Page 2/Introduction: when mentioning "*Besides their ecological and epidemiological importance, both abovementioned organisms show high phenotypic plasticity in response to environmental cues (e.g. the presence of predator for daphnia) or during their development (schistosoma)*". For non-ecology specialists, the authors should elaborate a bit more on that, or at least cite references illustrating this intriguing abovementioned phenotypic plasticity in line with associated epigenetic changes

We added the following sentence: "Classical studies have paved the way to a subsequent rich literature that has documented the amazing property of *Daphnia* to modify their phenotypes at the morphological, physiological, behavioral and more recently at the molecular levels in response to a large panel of environmental stressors including diet, pollution, heavy metals, and predator kairomones (reviewed in (Riessen 2011, Harris et al. 2012)). Furthermore, schistosomes deal with a multitude of signals from the water environment as well as cues that come from their hosts, shaping morphology, metabolism, and infection success in the short-term and also their full development later in life (Roquis et al. 2017, 2018, Augusto et al 2017, 2019). Our group characterized epigenetic mechanisms behind the phenotypic plasticity of schistosomes and their cross-talk with environmental cues, however *Daphnia* phenotype plasticity stills poorly understood."

7- Page 2/Introduction/end of the paragraph: I would move "*Controls must be done without organisms as input*" in the Mat&Met/transposase mixture section.

This was done.

8- Page 2/ Mat&Met: I would separate "Animal sampling" and "transposase mixture" sections.

This was done.

9- Page 2/Table2/Reagents produced in the laboratory: I would recommend using commercially available PBS1X, and not sure why another Tagmentation (TD) buffer is indicated here. Usually, the TD buffer is directly provided with the enzyme (as indicated in Table 1). If so, Table 2 is not needed.

We understand the reviewer concern, however we would like to keep this information on the paper. Our group is running several experiments using ATAC-seq and this is a useful information in the case of missing PBS 1X and/or TD buffer. When we use the Illumina kit in the lab, we can often dilute very much the Tn5 enzyme and what gets

limiting is the 2xTD buffer. The information about the composition of the buffer is actually not so easy to find and we wish to keep it in the article. We did not see any difference between commercial 2xTD buffer and "home-made" 2xTD. Also, Tn5 can now be purchased separately and even with custom adaptors, which has the potential of even more streamline the protocol.

10- Page 4/Figure1 could be a bit more explicit. At least indicate on the graph the one-third of the maximum fluorescent intensity to determine the additional PCR cycles.
The figure was changed (now figure 2).

11- Page 4/AMPure XP beads double-side purification: *"This step enriches for the nucleosome-free (~300 bp)" ... "regions as well as di and tri-nucleosome fragments"*. Maybe more correct like this. This specific point could be also mentioned in the Figure 3 legend.

We agree with reviewer suggestion and added the following sentence: This step enriches for the nucleosome-free (~300 bp) as well as di and tri-nucleosome fragments

12- Also mentioned: *"First transfer 45 ul to an Eppendorf tube (or use PCR tube directly)"*. After the additional PCR cycles and purification, DNA should be in 20 ul elution buffer. Need to be corrected or clarified for consistency in the following of the protocol.

Thank you to have found this! It was a "vestige" of an earlier version of the protocol. Elution is done into 45 µL now and not 20 µL.

13- Page 5/Results: Most data are also presented via a zenodo interface. However, the legends and labels of these figures are not always explicit, and the correspondence with the actual figures of the protocol is not always intuitive, something that could be readily improved.
We understand the comment. We had provided an Excel file with the description of the supporting raw data. However, this file is not directly accessible. We would need guideline from the editors. Should we provide a detailed description in the manuscript or on the Zenodo depository?

14- Page 6/Figure 3: the figure is showing fragment sizing. All profiles are rather homogeneous, except one, D. Pulex/bottom-left, with two clear peaks, one of small fragments in the range of 35 bp (probably the primers), one of large fragments in the range of 10 kb. As they did for Figure 2, the authors should comment on that and propose an alternative solution when this particular situation is encountered, i.e. needs further purification or it is acceptable to process.

Peaks at 35 bp and 10380 bp are spiked-in marker peaks for the BioAnalyser. They do not come from the samples. This was added to the figure legend.

Competing Interests: No competing interest.