

Tuberculosis patients co-infected with *Mycobacterium bovis* and *Mycobacterium tuberculosis* in an urban area of Brazil

Marcio Roberto Silva^{1,2/+}, Adalgiza da Silva Rocha³, Ronaldo Rodrigues da Costa⁴,
 Andrea Padilha de Alencar⁵, Vania Maria de Oliveira¹, Antônio Augusto Fonseca Júnior⁵,
 Mariana Lázaro Sales⁵, Marina de Azevedo Issa⁵, Paulo Martins Soares Filho⁵,
 Omara Tereza Vianello Pereira⁵, Eduardo Calazans dos Santos⁵,
 Rejane Silva Mendes⁵, Ângela Maria de Jesus Ferreira⁵, Pedro Moacyr Pinto Coelho Mota⁵,
 Philip Noel Suffys³, Mark Drew Crosland Guimarães²

¹Embrapa Gado de Leite ²Laboratório Nacional Agropecuário, Ministério da Agricultura Pecuária e Abastecimento, Pedro Leopoldo, MG, Brasil ³Programa de Pós-Graduação em Saúde Pública, Departamento de Medicina Preventiva e Social, Faculdade de Medicina, Universidade Federal de Minas Gerais, Belo Horizonte, MG, Brasil

³Laboratório de Biologia Molecular Aplicada a Micobactérias, Instituto Oswaldo Cruz-Fiocruz, Rio de Janeiro, RJ, Brasil

⁴Hospital Regional João Penido, Fundação Hospitalar do Estado de Minas Gerais, Juiz de Fora, MG, Brasil

In this cross-sectional study, mycobacteria specimens from 189 tuberculosis (TB) patients living in an urban area in Brazil were characterised from 2008-2010 using phenotypic and molecular speciation methods (pncA gene and oxyR pseudogene analysis). Of these samples, 174 isolates simultaneously grew on Löwenstein-Jensen (LJ) and Stonebrink (SB)-containing media and presented phenotypic and molecular profiles of Mycobacterium tuberculosis, whereas 12 had molecular profiles of M. tuberculosis based on the DNA analysis of formalin-fixed paraffin wax-embedded tissue samples (paraffin blocks). One patient produced two sputum isolates, the first of which simultaneously grew on LJ and SB media and presented phenotypic and molecular profiles of M. tuberculosis, and the second of which only grew on SB media and presented phenotypic profiles of Mycobacterium bovis. One patient provided a bronchial lavage isolate, which simultaneously grew on LJ and SB media and presented phenotypic and molecular profiles of M. tuberculosis, but had molecular profiles of M. bovis from paraffin block DNA analysis, and one sample had molecular profiles of M. tuberculosis and M. bovis identified from two distinct paraffin blocks. Moreover, we found a low prevalence (1.6%) of M. bovis among these isolates, which suggests that local health service procedures likely underestimate its real frequency and that it deserves more attention from public health officials.

Key words: *Mycobacterium bovis* - *Mycobacterium tuberculosis* - zoonotic tuberculosis

Although most cases of human tuberculosis (TB) are caused by *Mycobacterium tuberculosis*, there are rising concerns over infection with *Mycobacterium bovis*. First, there have been outbreaks of multidrug-resistant (MDR) *M. bovis* strains among hospitalised patients with human immunodeficiency virus (HIV) (Samper et al. 1997) and these outbreaks highlight the risk associated with MDR *M. bovis*, especially in countries where animals with *M. bovis* and humans with HIV co-exist. Second, evidence for person-to-person transmission of *M. bovis* has been demonstrated (Evans et al. 2007) and, third, zoonotic TB has re-emerged at the United States of America-Mexico border among immigrants from regions where bovine TB is endemic (Dankner et al. 1993, Dankner & Davis 2000, LoBue et al. 2003, Rodwell et al. 2010).

A Mexican study found that a high proportion of human TB cases were due to *M. bovis* in an endemic area of bovine TB (Pérez-Guerrero et al. 2008) and another Mexican study identified, through microbiological methods, the presence of mycobacteria in sputum samples of human TB patients with chronic respiratory problems. In this previous study, each sample was cultured in both Löwenstein-Jensen (LJ) broth with glycerol and Stonebrink (SB) medium containing pyruvate and 19 of 50 samples tested positive by culture; of these, 13 (68.4%) were identified as *M. tuberculosis*, three (15.8%) as *M. bovis* and three (15.8%) tested positive for both *M. tuberculosis* and *M. bovis* (Ordoñez et al. 1999).

In Latin America, the estimated proportion of zoonotic TB that is caused by *M. bovis* accounts for 2% and 8% of pulmonary (PTB) and extrapulmonary (EPTB) TB cases, respectively (Cosivi et al. 1998, de Kantor et al. 2008). In Brazil, a more representative study found that the proportion of zoonotic cases due to *M. bovis* was estimated to be 3.5% of all TB cases (Corrêa & Corrêa 1974). Moreover, de Kantor et al. (2008) conducted a historical report of *M. bovis* diagnoses made at several reference laboratories in Brazil and showed that the Professor Hélio Fraga National Referral Centre, located in the city of Rio de Janeiro (RJ), identified only one case

Financial support: CNPq (410595/2006-3)/MCT/CNPq/MS-SCTIE-DECIT 25/2006

MRS received a fellowship from the EMBRAPA.

+ Corresponding author: mrsilva@cnpq.embrapa.br

Received 22 September 2012

Accepted 7 January 2013

of TB due to *M. bovis* during a 20-year period (1987-2006). In addition, the Adolfo Lutz Institute, located in the city of São Paulo, tested approximately 355,000 EPTB cultures using pyruvate-containing medium and isolated only two *M. bovis* strains from 2001-2005. Furthermore, Rocha et al. (2011) and Silva et al. (2011) failed to identify any contribution of *M. bovis* to PTB cases in the Brazilian cities of Rio de Janeiro and Juiz de Fora.

The best estimate of the prevalence of zoonotic TB due to *M. bovis* in humans in Argentina, Brazil, Chile, Colombia, Costa Rica, Dominican Republic, Ecuador, Peru, Uruguay and Venezuela was published in 2008 (de Kantor et al. 2008). In Chile, Colombia, Costa Rica, the Dominican Republic, Peru and Uruguay, *M. bovis* was most likely never isolated from humans and only four of these countries reported bacteriologically confirmed cases of *M. bovis* infection in humans. Most of these cases were diagnosed in Argentina, where the mean prevalence of *M. bovis* cases in relation to those due to *M. tuberculosis* (2000-2006) ranged from 0.34-1%, according to region. In most of these 10 countries, the low coverage of *M. bovis*-appropriate culture methods, including pyruvate-containing media, likely contributes to the underestimation of this infection (de Kantor et al. 2008).

The differentiation between *M. bovis* and the *M. tuberculosis* complex (MTC) impacts TB treatment because *M. bovis* is intrinsically resistant to pyrazinamide (Konno et al. 1967). Moreover, *M. bovis* displays a dysgonic colony shape on conventional LJ medium and the inclusion of pyruvate-containing medium is useful for the detection of *M. bovis* in humans. Molecular biology constitutes another more recent tool for the detection of *M. bovis* in humans (Gutiérrez et al. 1999).

Sputum acid-fast bacilli (AFB) microscopy and histopathology are the standard criteria for TB diagnosis in Brazil, which may potentially overlook zoonotic TB cases. This potential has been demonstrated, as 5% of the herds and 0.85% of the cattle in the state of Minas Gerais (MG), Brazil (1999) were considered to represent tuberculin reactors according to the Brazilian Ministry of Agriculture, Livestock and Supply (MAPA 2006). Although no zoonotic TB cases have been reported by the Municipal Health Department of Juiz de Fora, these previous authors suspected that cases were overlooked because sputum AFB microscopy and histopathology served as the major criteria for TB diagnosis.

The main objective of this cross-sectional study was to determine the prevalence of *M. bovis* among patients at two referral centres in Juiz de Fora, a predominantly urban area of MG.

PATIENTS, MATERIALS AND METHODS

Study site and design - The patients were recruited from two TB referral centres between March 2008-February 2010. The first centre was located in a TB regional hospital, where direct microscopy for AFB and mycobacteria cultures for hospitalised patients was performed. The second centre was a local referral centre that performed direct microscopy for AFB and cultures in response to outpatient demands. These two centres treated 75% (n = 357) of all the TB cases (n = 476) reported in

Juiz de Fora during the study period. The majority (98%) of the study population lived in urban settlements.

TB patients were selected using specific inclusion criteria. Subjects who did not provide clinical specimens, such as sputum, bronchoalveolar lavage fluid, pleural fluid, biopsies for histopathological or microbiological diagnosis or culture samples for mycobacteria characterisation were excluded from the study. Most of the subjects (TB patients) who were excluded consisted of children and adolescents (< 17 years old) and EPTB cases, as local physicians generally did not request the complementary TB diagnosis tests for these patients (direct microscopy for AFB or culture for mycobacteria). Finally, all TB patients with at least one MTC strain characterised by phenotypic and molecular speciation methods, including culture (n = 176) or molecular methods from DNA extracted from tissue samples (n = 13), were considered study subjects.

Ethical approval - Written informed consent was obtained and the study was approved by the Ethical Research Review Board of the Federal University of Juiz de Fora (protocol 819.125.2006) and the Hospital Foundation of Minas Gerais (FHEMIG) (protocol 52/08). No personal information was disclosed and the samples were coded for analysis.

Primary isolation of mycobacteria - The Brazilian Ministry of Health (MS 2005) currently considers culture methods imperative for the diagnosis of paucibacillary TB, EPTB, nontuberculous mycobacteria (NTM) and suspected TB in HIV/acquired immune deficiency syndrome patients.

In Juiz de Fora, clinical examinations, X-rays and sputum bacilloscopy were performed in all cases where PTB was suspected and histopathology was performed in all cases where EPTB was suspected. However, cultures for AFB were not performed for all paucibacillary, EPTB and sputum AFB-positive PTB cases. Additionally, bacterial isolation was performed using only LJ glycerol-containing medium without simultaneously using SB pyruvate-containing medium and the lack of pyruvate in conventional LJ medium can make primary isolation of *M. bovis* more difficult.

Changes in the procedures for TB diagnosis were implemented to detect zoonotic TB due to *M. bovis*. The samples were collected by clinical officers who were responsible for TB cases in the referral centres. All biological specimens (negative and positive for AFB) underwent decontamination using Darzins' method and the sediments were inoculated simultaneously in LJ and SB-containing media. Readings were taken at seven, 30, 45 and 60 days of incubation at 36.5°C (Kent & Kubica 1985). Media samples that remained incubated for at least 60 days without any colonisation were considered negative for mycobacteria growth (Drobniewski et al. 2003). The primary isolation of mycobacteria was carried out at the João Penido Regional Hospital of the FHEMIG.

Phenotype-based speciation methods - Isolates that grew on both the conventional LJ and pyruvate-containing SB media were suggestive of *M. tuberculosis*, while those

that grew exclusively on pyruvate-containing SB media were suggestive of *M. bovis*. All positive AFB cultures were subjected to additional phenotypic speciation methods. Standard biochemical tests, such as tests for catalase at both room temperature (RT) and at 68°C; niacin, nitrate, pyrazinamidase and urease, as well as drug susceptibility testing to thiophen-2-carboxylic acid hydrazide (TCH) were performed to distinguish *M. bovis* strains from other MTC strains (Kent & Kubica 1985). These analyses were carried out at the National Agricultural Laboratory of the MAPA. *M. tuberculosis* usually presents positive results while *M. bovis* is negative to niacin, nitrate, pyrazinamidase and urease tests. Both strains present negative results to the catalase test at RT, as well as at 68°C tests. *M. tuberculosis* strains are resistant to TCH, whereas the *M. bovis* strains are susceptible to TCH.

Molecular speciation methods - A replicate of all positive AFB cultures that grew on LJ or SB-containing media was separately heat-inactivated (Van Embden et al. 1993) and DNA extraction (Van Embden et al. 1993) was performed. A two-step approach was used to distinguish between *M. bovis* and other types in the MTC from inactivated cultures. The first step consisted of amplification of the *pncA* gene (Scorpio & Zhang 1996) and polymorphism detection by DNA restriction enzyme analysis (*Eco065* I) (Barouni et al. 2004). The second step consisted of partial amplification (150 bp) of the *oxyR* pseudogene (Taylor et al. 1999) and polymorphism detection by DNA restriction enzyme analysis (*Alu* I) (Sreevatsan et al. 1996). This analysis was carried out at the Laboratory of Molecular Biology Applied to Mycobacteria at the Oswaldo Cruz Institute, Oswaldo Cruz Foundation (IOC-Fiocruz).

Local physicians did not request mycobacteria cultures on a routine basis. Rather, histopathology was performed on all suspected EPTB specimens. For this reason, an alternative to culture was needed to include this subgroup in the present study. Formalin-fixed and paraffin wax-embedded biopsy tissue samples from subjects who presented lesions suggestive of EPTB (chronic granulomatous inflammatory lesions with caseous necrosis) were subjected to DNA extraction and partial amplification (150 bp) of the *oxyR* pseudogene (Zink & Nerlich 2004) and restriction enzyme (*Alu* I) analysis (Sreevatsan et al. 1996) or DNA sequencing (Taylor et al. 1999) to identify MTC carriers. The sequence data were assembled and edited electronically with the SeqScape 2.6V program and were compared to published sequences of the *oxyR* pseudogene of *M. bovis* subsp. *bovis* AF2122/97 (GenBank accession BX248342.1) and *M. tuberculosis* H37Rv (GenBank accession BX842579.1). This analyses was carried out at the Laboratory of Molecular Biology Applied to Mycobacteria at the IOC-Fiocruz.

Epidemiological data collection - Verbal consent was obtained from each TB patient upon explanation of the study purpose and counselling for the laboratory tests. On presentation at the hospital, the patients were interviewed and the clinical forms were completed. The interview was conducted to collect information on a range of variables relating to clinical data, behavioural data,

patterns of milk product consumption and occupation. Milk and cheese consumption was assessed according to the frequency of consumption and the type of food preparation (boiled, pasteurised or raw). BCG status was also recorded. Zoonotic exposure to *M. bovis* in humans was defined as unpasteurised milk and cheese consumption or occupations related to livestock and agro-food industries of animal origin.

Additional patient data were obtained from notification records at the Department of Epidemiology of the Municipal Health Department of Juiz de Fora.

Data processing and analysis - The data entry and database management were performed using Epi Info software. The potential differences between included and excluded subjects were assessed using chi-squared tests and the level of significance was set to 0.05. The proportions of each type of mycobacterial infection in the population were determined (Dean et al. 1994) and an overall description of all *M. bovis* infections was compiled.

RESULTS

A total of 476 TB and mycobacteriosis cases were reported in Juiz de Fora during the study period. Of these 476 cases, 119 (25%) were referred to health centres that were not included in this study and 357 (75%) were referred to the two health centres that were included in this study. Of the 357 cases of TB and mycobacteriosis, 168 were excluded because (i) the cultures were not performed ($n = 2$), (ii) the specimens could not be cultivated due to either technical problems ($n = 46$) or the absence of specimens ($n = 61$), (iii) biopsies were not available ($n = 15$), (iv) the culture was lost ($n = 1$) or the mycobacteria characterisation was inconclusive ($n = 41$) or (v) only *Mycobacterium avium* complex profiles ($n = 2$) were identified. After these cases were excluded, 189 cases remained for analysis.

Table I shows the descriptive characteristics of the included subjects and the comparison to TB cases that were reported in the county, but not included in the study. There were no significant differences ($p > 0.05$) in regards to the municipality of residence, current residence in a rural area or diagnosis of HIV between these two subpopulations of TB patients. However, gender, age, clinical TB form and educational level were significantly different ($p < 0.05$). Of the 189 cases, 168 (88.9%), 17 (9%) and four (2.1%) presented PTB, EPTB and PTB/EPTB clinical TB forms, respectively.

Table II presents the potential zoonotic exposures to *M. bovis*. Most of the included subjects (97.4%) lived in an urban area of Juiz de Fora, some were current consumers of unpasteurised milk, many were current (31.2%) or former (27%) consumers of unpasteurised cheeses and many of these subjects (34.4%) had a history of occupations related to livestock or agro-food industries of animal origin.

The Figure shows the conventional and molecular results of the mycobacteria characterisation from specimens of TB patients ($n = 189$). Of the 189 TB patients, 186 exclusively presented *M. tuberculosis* profiles in all the clinical specimens analysed. Three patients pre-

sented profiles of both *M. tuberculosis* and *M. bovis* in different specimens (co-infections). Of these co-infected patients, the amplification and sequencing results of the *oxyR* pseudogene from DNA extracted from a pleural biopsy of patient 1 (PTB and EPTB) showed a profile of *M. bovis*, whereas *M. tuberculosis* was cultured and confirmed by phenotypic and molecular speciation methods from a bronchial lavage specimen. For patient 2 (EPTB), no isolation by culture was obtained, but the amplification and sequencing of the *oxyR* pseudogene of DNA extracted from two biopsy fragments revealed profiles of *M. bovis* and *M. tuberculosis*. For patient 3 (PTB), two isolates from two different sputum samples showed profiles of *M. bovis* and *M. tuberculosis*, which were confirmed by phenotypic and phenotypic/molecular methods, respectively.

Among the three patients who had *M. bovis* co-infections, two cases were confirmed by molecular techniques involving the amplification and sequencing of the *oxyR* pseudogene from DNA extracted from biopsies. The re-

sultant partial sequences of the *oxyR* pseudogene were more concordant with *M. bovis* subsp. *bovis* AF2122/97 than with *M. tuberculosis* H37Rv. Furthermore, these sequences displayed the molecular profiles of *M. bovis* (adenine instead of guanine at position 285 of the pseudogene). In addition, one PTB patient had an isolate that scantily grew only in SB medium and presented the phenotypic profile of *M. bovis* (Figure).

All the co-infected patients were HIV-negative, but they had received potential zoonotic exposure to *M. bovis* (unpasteurised cheese consumption or occupations concerning livestock and agro-food industries of animal origin) throughout their lifetimes (Table III). In addition, one (5.8%) of the 17 EPTB cases, one (25%) of the four EPTB/PTB cases and one (0.6%) of the 168 PTB cases presented profiles of *M. bovis* infection (see also clinical forms, Table I). With regard to the TB treatment outcomes, patient 1 had been cured, but developed recurrent TB one year after the end of treatment, patient 2 was cured and patient 3 died.

TABLE I
Descriptive characteristics of included subjects (n = 189) and their comparison (chi-square test) with tuberculosis (TB) cases non-included (n = 285), city of Juiz de Fora, state of Minas Gerais, Brazil, 2008-2010

Characteristics	Included n = 189 n (%)	Non-included n = 285 n (%)	p
Sex			
Male	140 (74)	180 (63.2)	0.01
Female	49 (26)	105 (36.8)	
Age			
< 17	0 (0)	23 (8)	< 0.0001
17-38	89 (47.1)	148 (52)	
> 38	100 (52.8)	114 (40)	
Educational level			
None-fourth step of elementary school	62 (32.8)	37 (13)	< 0.001
Fifth-eighth step of elementary school	53 (28)	24 (8.5)	
Complete or incomplete high school	25 (13.2)	27 (9.4)	
Complete or incomplete undergraduate	6 (3.2)	19 (6.6)	
Unknown ^a	43 (22.8)	178 (62.5)	
Residence			
Juiz de Fora	167 (88.4)	259 (90.9)	0.23
Other cities of Brazil	22 (11.6)	26 (9.1)	
Live in rural area at this moment			
Yes	4 (2.1)	2 (0.7)	0.17 ^b
No	185 (97.9)	283 (99.3)	
Clinical TB forms			
Pulmonary	168 (88.9)	199 (69.8)	< 0.0001
Extrapulmonary	17 (9)	81 (28.4)	
Pulmonary and extrapulmonary	4 (2.1)	5 (1.8)	
Serological diagnosis of HIV			
Positive	24 (12.7)	26 (9.1)	0.43
Negative	86 (45.5)	103 (36.2)	
Unknown ^a	79 (41.8)	156 (54.7)	

^a: not included in χ^2 calculation; ^b: Fisher exact test; HIV: human immunodeficiency virus.

TABLE II

Possible zoonotic exposures to *Mycobacterium bovis* infections in study population (n = 189), city of Juiz de Fora, state of Minas Gerais, Brazil, March 2008-February 2010

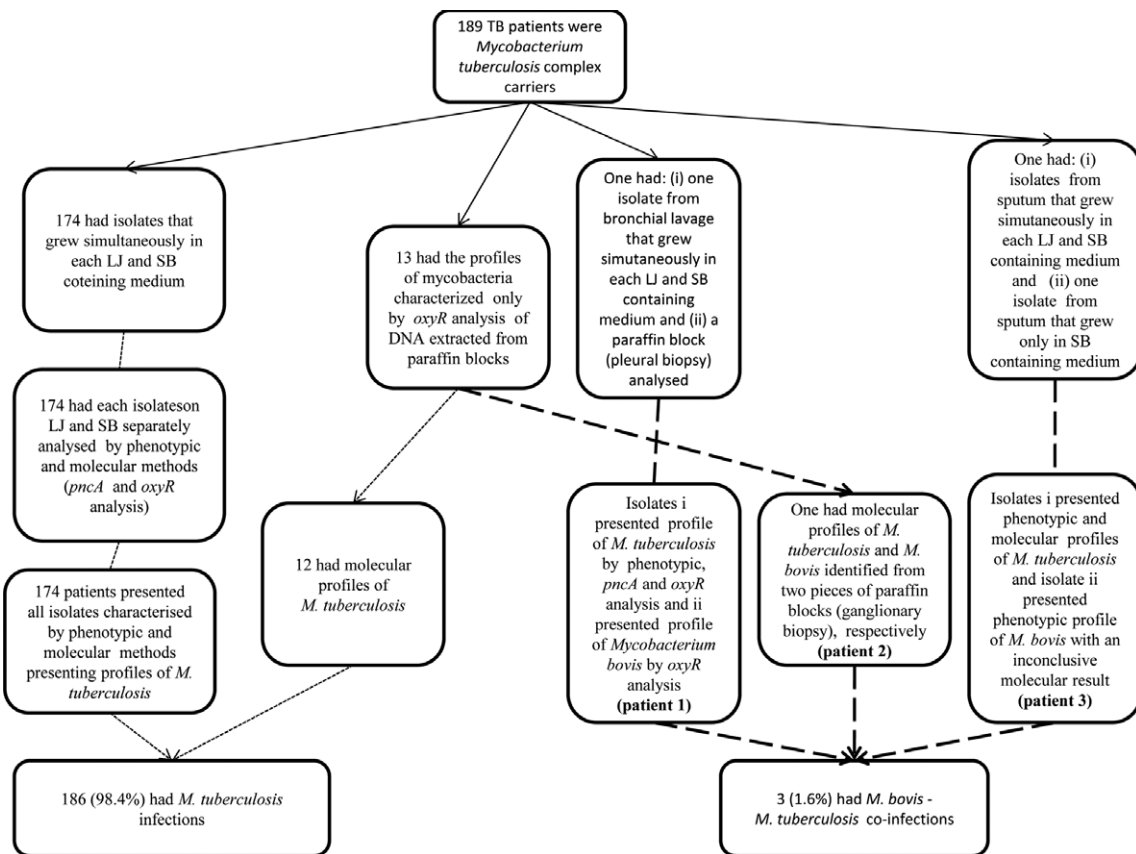
Characteristics	n (%)
Reside in rural areas	
At this moment	4 (2.6)
In the past	54 (28.6)
Never lived in rural areas	131 (69.3)
History of livestock or agro-food industry of animal origin	65 (34.4)
Yes	67 (35.5)
No	57 (30.1)
Unknown	
History of unpasteurised cheese consumption	
Current consumers	59 (31.2)
Ex-consumers	51 (27)
Never consumed	23 (12.1)
Unknown	56 (29.7)
History of unpasteurised milk consumption	
Current consumers	15 (7.9)
Ex-consumers	72 (38.1)
Never consumed	46 (24.3)
Unknown	56 (29.7)

DISCUSSION

We found evidence of *M. bovis* co-infection in three (1.6%) out of 189 patients and two of these cases were confirmed using molecular speciation methods.

The potential source of *M. bovis* infection for two of these TB patients was unpasteurised cheese, where zoonotic agents can remain viable and cause EPTB. For the PTB patient, the potential source of *M. bovis* infection was related to work with goats or slaughterhouses; goats can be carriers of *M. bovis* and slaughterhouses may contain contaminated aerosols that could cause PTB.

There are several potential explanations for the absence of *pncA* gene and *oxyR* pseudogene amplification from the isolate of the PTB patient with an *M. bovis* profile as detected using phenotypic methods. For instance, there may have been incomplete cell lysis and DNA release due to incorrect timing or temperatures during the mycobacteria DNA extraction or this procedure may have affected the integrity of the genetic material. In general, a variety of methods can be used for DNA isolation from different biological materials. However, the isolation of nucleic acids from mycobacteria is more difficult than from other microorganisms due to the thick peptidoglycan layer in the cell wall (Wards et al. 1995, Cornejo et al. 1998). In the present study, we were unable to amplify



Results of mycobacteria characterization of specimens from study population (n = 189), city of Juiz de Fora, state of Minas Gerais, Brazil, 2008-2010. LJ: conventional Löwenstein-Jensen containing medium; *oxyR*, *oxyR*: pseudogene; *pncA*, *pncA*: gene; SB: Stonebrink containing medium; TB: tuberculosis.

DNA on the first attempt for 13% of the isolates that had *M. tuberculosis* molecular profiles and the DNA extractions therefore had to be repeated. However, the sample diagnosed as *M. bovis* using phenotypic methods was of insufficient quantity for a new DNA extraction.

All of the subjects in this study with *M. bovis* infections were co-infected with *M. tuberculosis*. We classified these as co-infections because both species are human obliged pathogens. In Mexico, a previous study found a high proportion (15.7%) of *M. bovis*-*M. tuberculosis* co-infections and exclusive *M. bovis* infections (15.7%) in chronic cases of TB (Ordoñez et al. 1999) and these authors reinforced the importance of including mycobacteria cultures on both LJ and pyruvate-containing media and identifying species during routine TB diagnosis where bovine TB is endemic.

The proportion of *M. bovis* in this study (1.6%) was slightly lower than the 3.5% reported in a previous Brazilian study (Corrêa & Corrêa 1974), but higher than those reported in recent Brazilian studies that either could not find any profiles of *M. bovis* (Rocha et al. 2011, Silva et al. 2011) or found a much lower prevalence (de Kantor et al. 2008). These recent findings (Rocha et al. 2011, Silva et al. 2011), including our own data, suggests that the importance of *M. bovis* in the global burden of PTB in Brazil is marginal (Rocha et al. 2011).

However, the molecular profile of *M. bovis*, as revealed by pleural biopsy examination, was useful for the local physicians to redefine anti-TB therapy for the patient who experienced recurrent TB one year after the end of the first treatment. Moreover, the patient with PTB due to *M. bovis* developed chronic TB and died and these clinical and epidemiological findings strengthen the involvement of *M. bovis*, which is intrinsically resistant to pyrazinamide and therefore may be more involved in TB relapses or chronic infections (Konno et al. 1967, Ordoñez et al. 1999).

There are potential limitations to this study. For instance, some potential participants were excluded from the study because many sputum samples with positive bacilloscopy did not have culture performed due to a lack of compliance to request mycobacteria cultures on a routine basis or a failure to cultivate mycobacteria due to technical problems, whereas other excluded subjects

(most EPTB patients) lacked either cultures or paraffin blocks. Of the remaining TB patients reported in Juiz de Fora who were not included in this study, a large proportion of them were either younger than 17 years of age ($\chi^2 = 19.9$; $p < 0.0001$) or had EPTB ($\chi^2 = 26.1$; $p < 0.0001$). This may have been due to a lack of compliance to request mycobacteria cultures on a routine basis. Moreover, the non-inclusion of children and the lower proportion of EPTB cases among the included subjects could have underestimated *M. bovis* infection because both groups are historically more susceptible to this zoonotic agent (Corrêa & Corrêa 1974). Finally, the present study only involved urban health centres in a predominantly urban population. These limitations are present in the majority of Brazilian studies (de Kantor et al. 2008, Rocha et al. 2011, Silva et al. 2011) and may result in the underestimation of the prevalence of *M. bovis*.

Perhaps because of similar limitations, only four of 10 Latin American countries (1970-2007) reported the occurrence of human TB due to *M. bovis*. In the same study, Argentina had the most reported *M. bovis* cases (there were 2 cases in Ecuador, 10 cases in Brazil and 1 case in Venezuela), which may be because this country conducts more representative studies and traditionally uses either egg-based pyruvate-containing SB or semi-synthetic media to preferentially grow *M. bovis*. Taking into account the limitations cited above, these previous authors concluded that the negative data from other countries was likely the result of underestimation of the relative prevalence of *M. bovis* (de Kantor et al. 2008).

In conclusion, this study presented evidence of *M. bovis* infections in the urban setting in Brazil. However, further work to assess the prevalence of *M. bovis* infections in small cities and rural populations in Brazil is needed. A national-based survey of human TB due to *M. bovis* is also needed and this could be nested into the current national survey of MDR TB. Moreover, widespread use of pyruvate-containing media for the detection of mycobacteria should also be considered as a potential strategy to improve our current knowledge of the contribution of *M. bovis* to the Brazilian TB burden. Finally, the potential health hazards of unpasteurised milk consumption should be emphasised for regions in which bovine TB is still prevalent.

TABLE III

Comparative characteristics of three patients who were *Mycobacterium bovis* carriers, city of Juiz de Fora, state of Minas Gerais, Brazil, 2008-2010

Patients	Clinical tuberculosis forms	Age (years)	HIV	Occupation with livestock and agro industry	Unpasteurised cheese consumption	Unpasteurised milk consumption
1	Pulmonary and pleural	20	N	Never	Current	Never
2	Ganglionic	50	N	Never	Current	Never
3	Pulmonary	33	N	Goats and slaughterhouse	Ex-consumer	Never

HIV: human immunodeficiency virus; N: negative

ACKNOWLEDGEMENTS

To the CITO, EBLÉN, Cytopathology, Macro-regional and Ezequiel Dias Foundation, by kindly provide us the clinical specimens, and to Marcos Thadeu Rangel L'Hotellier, Mayumi Seito and Mércia Guadalupe Ramos, for assistance in the project.

REFERENCES

- Barouni AS, Augusto CJ, Lopes MT, Zanini MS, Salas CE 2004. A *pncA* polymorphism to differentiate between *Mycobacterium bovis* and *Mycobacterium tuberculosis*. *Mol Cell Probes* 18: 167-170.
- Cornejo BJ, Sahagun-Ruiz A, Suarez-Guemes F, Thornton CG, Ficht TA, Adams LG 1998. Comparison of C-18-carboxypropylbetaine and glass bead DNA extraction methods for detection of *Mycobacterium bovis* in bovine milk samples and analysis of samples by PCR. *Appl Environ Microbiol* 64: 3099-3101.
- Corrêa CNM, Corrêa WM 1974. Tuberculose humana por bacilo bovino em São Paulo, Brasil. *Arq Inst Biol* 41: 131-134.
- Cosivi O, Grange JM, Daborn CJ, Raviglione MC, Fujikura T, Cousins D, Robinson RA, Huchzermeyer HF, de Kantor I, Meslin FX 1998. Zoonotic tuberculosis due to *Mycobacterium bovis* in developing countries. *Emerg Infect Dis* 4: 59-70.
- Dankner WM, Davis CE 2000. *Mycobacterium bovis* as a significant cause of tuberculosis in children residing along the United States-Mexico border in the Baja California region. *Pediatrics* 105: e79.
- Dankner WM, Waecker NJ, Essey MA, Moser K, Thompson M, Davis CE 1993. *Mycobacterium bovis* infections in San Diego: a clinicoepidemiologic study of 73 patients and a historical review of a forgotten pathogen. *Medicine (Baltimore)* 72: 11-37.
- de Kantor IN, Ambroggi M, Poggi S, Morcillo N, da Silva Telles MA, Osório Ribeiro M, Garzón Torres MC, Llerena Polo C, Ribón W, García V, Kuffo D, Asencios L, Vásquez Campos LM, Rivas C, de Waard JH 2008. Human *Mycobacterium bovis* infection in ten Latin American countries. *Tuberculosis (Edinb)* 88: 358-365.
- Dean AG, Dean JA, Coulombier D, Brendel KA, Smith DC, Burton AH, Dickler RC, Sullivan K, Fagan RF, Arner TG 1994. Epi Info Version 6.01. A word processing, database and statistics program for epidemiology on microcomputers, Centers for Disease Control and Prevention, Atlanta, GA.
- Drobniewski F, Strutt M, Smith G, Magee J, Flanagan P 2003. Audit of scope and culture techniques applied to samples for the diagnosis of *Mycobacterium bovis* by hospital laboratories in England and Wales. *Epidemiol Infect* 130: 235-237.
- Evans JT, Smith EG, Banerjee A, Smith RMM, Dale J, Innes JA, Hunt D, Tweddell A, Wood A, Anderson C, Hewinson RG, Simth NH, Hawkey PM, Sonnenberg P 2007. Cluster of human tuberculosis caused by *Mycobacterium bovis*: evidence for person-to-person transmission in the UK. *Lancet* 369: 1270-1276.
- Gutiérrez MC, Galán JC, Blázquez J, Bouvet E, Vincent V 1999. Molecular markers demonstrate that the first described multidrug-resistant *Mycobacterium bovis* outbreak was due to *Mycobacterium tuberculosis*. *J Clin Microbiol* 37: 971-975.
- Kent PT, Kubica GP 1985. *Public health mycobacteriology: a guide for the level III laboratory*, US Department of Health and Human Services/Public Health Service/Centers for Disease Control, Atlanta, 207 pp.
- Konno K, Feldman FM, McDermott W 1967. Pyrazinamide susceptibility and amidase activity of tubercle bacilli. *Am Rev Respir Dis* 95: 461-469.
- LoBue PA, Betacourt W, Peter C, Moser KS 2003. Epidemiology of *Mycobacterium bovis* disease in San Diego county, 1994-2000. *Int J Tuberc Lung Dis* 7: 180-185.
- MAPA - Ministério da Agricultura, Pecuária e Abastecimento Brasil 2006. *Programa Nacional de Controle e Erradicação da Brucelose e da Tuberculose Animal (PNCEBT)*, MAPA/SDA/DSA, Brasília, 188 pp.
- MS - Ministério da Saúde Brasil 2005. *Manual de bacteriologia da tuberculose*, 3rd ed., Centro de Referência Professor Hélio Fraga/Secretaria de Vigilância em Saúde, Rio de Janeiro, 240 pp.
- Ordoñez PT, Sauzo FM, Flores MAS, Casillas ICR 1999. Aislamiento e identificación de *Mycobacterium bovis* a partir de muestras de expectoración de pacientes humanos com problemas respiratórios crônicos. *Vet Mex* 30: 227-229.
- Pérez-Guerrero L, Milián-Suazo F, Arriga-Díaz C, Romero-Torres C, Escartín-Chávez M 2008. Epidemiología molecular de las tuberculosis bovina y humana em uma zona endêmica de Querétaro, México. *Salud Publica Mex* 50: 286-291.
- Rocha A, Elias AR, Sobral LF, Soares DF, Santos AC, Marsico AG, Hacker MA, Caldas PC, Parente LC, Silva MR, Fonseca L, Suffys P, Boéchat N 2011. Genotyping did not evidence any contribution of *Mycobacterium bovis* to human tuberculosis in Brazil. *Tuberculosis (Edinb)* 91: 14-21.
- Rodwell TC, Kapasi AJ, Moore M, Milian-Suazo F, Harris B, Guerrero LP, Moser K, Strathdee SA, Garfein RS 2010. Tracing the origins of *Mycobacterium bovis tuberculosis* in humans in the USA to cattle in Mexico using spoligotyping. *Int J Infect Dis* 14: 29-35.
- Samper S, Martín C, Pinedo A, Rivero A, Blázquez J, Baquero F, van Soolingen D, van Embden J 1997. Transmission between HIV-infected patients of multidrug-resistant tuberculosis caused by *Mycobacterium bovis*. *AIDS* 11: 1237-1242.
- Scorpio A, Zhang Y 1996. Mutations in *pncA*, a gene encoding pyrazinamidase/nicotinamidase, cause resistance to the antituberculous drug pyrazinamide in tubercle bacillus. *Nat Med* 2: 635-636.
- Silva MR, Guimarães MDC, de Oliveira VM, Moreira AS, da Costa RR, Abi-Zaid KCF, Rocha AS, Suffys PN 2011. Identification of *Mycobacterium tuberculosis* complex based on amplification and sequencing of the *oxyR* pseudogene from stored Ziehl-Neelsen-stained sputum smears in Brazil. *Mem Inst Oswaldo Cruz* 106: 9-15.
- Sreevatsan S, Escalante P, Pan X, Gillies DA 2nd, Siddiqui S, Khalaf CN, Kreiswirth BN, Bifani P, Adams LG, Ficht T, Perumaalla VS, Cave MD, van Embden JD, Musser JM 1996. Identification of a polymorphic nucleotide in *oxyR* specific for *Mycobacterium bovis*. *J Clin Microbiol* 34: 2007-2010.
- Taylor GM, Goyal M, Legge AJ, Shaw RJ, Young D 1999. Genotypic analysis of *Mycobacterium tuberculosis* from medieval human remains. *Microbiology* 145: 899-904.
- Van Embden JDA, Cave MD, Crawford JT, Dale JW, Eisenach KD, Gicquel B, Hermans P, Martin C, McAdam R, Shinnick TM 1993. Strain identification of *Mycobacterium tuberculosis* by DNA fingerprinting: recommendation for a standardized methodology. *J Clin Microbiol* 31: 406-409.
- Wards BJ, Collins DM, de Lisle GW 1995. Detection of *Mycobacterium bovis* in tissues by polymerase chain reaction. *Vet Microbiol* 43: 227-240.
- Zink AR, Nerlich AG 2004. Molecular strain identification of the *Mycobacterium tuberculosis* complex in archival tissue samples. *J Clin Pathol* 57: 1185-1192.