

RESEARCH

Open Access

The midgut of *Aedes albopictus* females expresses active trypsin-like serine peptidases

Leonardo Saboia-Vahia¹, Patricia Cuervo², Andre Borges-Veloso¹, Nathália Pinho de Souza², Constança Britto¹, Geovane Dias-Lopes¹ and Jose Batista De Jesus^{1,3*}

Abstract

Background: *Aedes albopictus* is widely distributed across tropical and sub-tropical regions and is associated with the transmission of several arboviruses. Although this species is increasingly relevant to public health due its ability to successfully colonize both urban and rural habitats, favoring the dispersion of viral infections, little is known about its biochemical traits, with all assumptions made based on studies of *A. aegypti*. In previous studies we characterized the peptidase profile of pre-imaginal stages of *A. albopictus* and we reported the first proteomic analysis of the midgut from sugar-fed females of this insect species.

Methods: In the present work, we further analyzed the peptidase expression in the midgut of sugar-fed females using 1DE-substrate gel zymography, two-dimensional electrophoresis (2DE), mass spectrometry (MS), and protein identification based on similarity.

Results: The combination of zymography, in solution assays using fluorescent substrates and 2DE-MS/MS allowed us to identify the active serine peptidase “fingerprint” in the midgut of *A. albopictus* females. Zymographic analysis revealed a proteolytic profile composed of at least 13 bands ranging from ~25 to 250 kDa, which were identified as trypsin-like serine peptidases by using specific inhibitors of this class of enzymes. Concomitant use of the fluorogenic substrate Z-Phe-Arg-AMC and trypsin-like serine protease inhibitors corroborated the zymographic findings. Our proteomic approach allowed the identification of two different trypsin-like serine peptidases and one chymotrypsin in protein spots of the alkaline region in 2DE map of the *A. albopictus* female midgut. Identification of these protein coding genes was achieved by similarity to the *A. aegypti* genome sequences using Mascot and OMSSA search engines.

Conclusion: These results allowed us to detect, identify and characterize the expression of active trypsin-like serine peptidases in the midgut of sugar-fed *A. albopictus* females. In addition, proteomic analysis allowed us to confidently assign the expression of two trypsin genes and one chymotrypsin gene to the midgut of this mosquito. These results contribute to the gene annotation in this species of unknown genome and represent a small but important step toward the protein-level functional and localization assignment of trypsin-like serine peptidase genes in the *Aedes* genus.

Keywords: *Aedes albopictus*, Culicidae, Midgut, Zymography, Proteomics, Two-dimensional electrophoresis, Mass spectrometry

* Correspondence: jbj@ioc.fiocruz.br

¹Laboratório de Biologia Molecular e Doenças Endêmicas, Instituto Oswaldo Cruz, FIOCRUZ, Rio de Janeiro, Brazil

³Universidade Federal de São João del Rei, São João del Rei, MG, Brazil

Full list of author information is available at the end of the article

Background

Aedes (*Stegomyia*) *albopictus* (Skuse) has a wide geographic distribution, covering all tropical and subtropical regions of the world, and is a vector for the viruses responsible for yellow fever and dengue [1]. The World Health Organization estimates that more than 50–100 million cases of these two diseases can occur per year throughout the world [2-4]. In Brazil, *A. albopictus* has been reported in 21 states and 1,502 municipalities [5]. In recent years, the relevance of this species to public health has increased because it is able to successfully colonize both urban and rural habitats, favoring the dispersion and interchange of the virus from one area to another, and thereby enabling the emergence of new areas of disease in small and large cities [6,7].

The hydrolysis of proteins to amino acid residues by proteolytic enzymes is an important step in food digestion, protein turnover and proteostasis in eukaryotes [8,9]. Proteolytic enzymes are divided into endopeptidases and exopeptidases. Endopeptidases are relatively small molecules (~25-30 kDa) that can pass through peritrophic membrane pores and endoperitrophic spaces in insects, where they cleave large protein complexes. Exopeptidases are large enzymes (>100 kDa) that are usually linked to the plasma membrane of the midgut epithelium and hydrolyze the ends of small proteins and peptides (N-terminus or C-terminus) [10]. Among endopeptidases, trypsin-like and chymotrypsin-like serine peptidases are the most important enzymes for most insects, except for some species of coleoptera and hemiptera [11-16].

Serine peptidases are divided into families and subfamilies. The subfamily S1 consists of trypsins, chymotrypsins and elastases, and some serine collagenases were also recently included. The catalytic triad of serine peptidases is typically characterized by serine, histidine and aspartic acid residues [17,18]. This triad hydrolyzes peptide bonds at the carboxylic ends of basic amino acids, with a 2-10-fold preference for Arg over Lys [19-21]. The *A. aegypti* genome contains 369 genes coding for serine peptidases, among which 66 are putative trypsins [22], but only 5 (three trypsins and two chymotrypsins) are well characterized in the midgut of females of this insect [13-16,23]. The expansion of trypsin-like serine peptidase genes in mosquitoes has been shown to coincide with the development of the hematophagous trait [24]. Trypsin-like serine peptidases in these insects play pivotal roles in oogenesis, immunity, metamorphosis, modulation of embryonic development and nutrition [25,26]. These enzymes are mostly located in the insect midgut so that they can provide energy and essential amino acids for development [20,27]. Furthermore, secretion of trypsin-like serine peptidases into the lumen of the midgut is involved in defense against pathogens [28,29]. However, in the insect vector *Anopheles gambiae*, trypsin-like

enzymes are exploited by pathogens such as *Plasmodium* sp. to activate their own peptidases, thus allowing the parasite to cross the peritrophic membrane and continue its developmental life cycle [30].

The plasticity exhibited by trypsin-like serine peptidases enables these enzymes to modulate various biological processes in insect vectors. Because of this characteristic, serine peptidases have been proposed as potential targets for insect control approaches. The biochemical characterization of these enzymes may thus support the development of new control strategies, enabling their appropriate use as targets and suggesting ways to interfere with the production of these enzymes or with the metabolic pathways in which they participate [31,32].

In previous studies, we characterized the peptidase profile of the pre-imaginal stages of *A. albopictus* [33] and reported the first proteomic analysis of the midgut of sugar-fed females of this insect species [33]. In the present work, we further analyze the peptidase expression in the midgut of sugar-fed females using two-dimensional electrophoresis (2DE), mass spectrometry, 1DE-substrate gel, and data mining. This multi-methodological approach allowed us to identify the active serine peptidase “fingerprint” in the midgut of *A. albopictus* females.

Methods

Chemicals

To prepare the phenylmethylsulfonylfluoride (PMSF) stock solution, 250 mM of the reagent was diluted in isopropanol. N α -tosyl-L-lysine chloromethyl ketone hydrochloride (TLCK) and N-p-tosyl-L-phenylalanine chloromethyl ketone (TPCK) were dissolved in methanol, both at 100 mM. Stock solutions of 1,10-phenanthroline (200 mM) and pepstatin A (1 mg/ml) were prepared in ethanol, and *trans*-epoxysuccinyl L-leucylamido-(4-guanidino) butane (E-64, 10 mM) was prepared in water. Stock and working solutions were maintained at -20°C. All chemicals were purchased from Sigma Chem. Co. (USA), unless otherwise specified.

Insect rearing and gut dissection

Aedes albopictus specimens reared in a closed colony (Laboratório de Transmissores de Hematozoários, Instituto Oswaldo Cruz, FIOCRUZ, Rio de Janeiro) were kindly provided by Dr. Nildimar A. Honorio. Mosquitoes were maintained on a 10% sucrose diet at 25 \pm 1°C, with a relative humidity of 60 \pm 10% and a light:dark photoperiod of 14:10 h. For each experiment, 50 female adults (2–5 days old) were cold-anesthetized on ice and decapitated. Midgut dissection was performed as previously described [33].

Zymography and peptidase inhibition assays

For proteolytic assessment, midguts were washed twice with PBS pH 7.2 and lysed as previously described [33].

Briefly, midguts were lysed with a cell disruption motor drive and pestle in a tube containing 10% glycerol, 0.6% Triton X-100, 100 mM Tris-HCl pH 6.8 and 150 mM NaCl [34]. The protein concentration of the resulting extracts was determined using the Pierce 660 nm Protein assay (Thermo Scientific). For protein separation, 30 µg of protein were loaded in 12% polyacrylamide gels copolymerized with 0.1% porcine gelatin as the substrate. Electrophoreses were performed at 4°C with a constant voltage of 110 V. Peptidase activity was detected as previously reported [33] with few modifications. The gels were incubated at 37°C for 2, 4, 6, 12 or 24 h in reaction buffer containing 100 mM sodium acetate (at pH 3.5 or 5.5) or 100 mM Tris-HCl (pH 7.5 or 10.0). Substrate degradation was visualized as clear bands after staining the gels with 0.2% Coomassie blue R-250 in methanol/acetic acid (40:10) and destaining in 10% acetic acid. The relative molecular masses of the activity bands were estimated by comparison with the mobility of a commercial molecular mass standard (PageRuler™ Protein Ladder, Fermentas). To determine the classes of peptidases detected by zymography, peptidase inhibition assays were conducted. Midgut homogenates were pre-incubated (before electrophoresis) for 30 min at 4°C with one of the following peptidase inhibitors: 20 µM E-64, 5 mM PMSE, 100 µM TLCK, 100 µM TPCK, 10 µM pepstatin-A or 10 mM 1,10-phenanthroline. After electrophoresis, inhibitors were added to the reaction buffer at the same concentration, and the peptidases were resolved as described above. The results were derived from three independent experiments carried out in triplicate.

In-solution enzymatic assays

The effects of pH and peptidase inhibitors on the proteolytic activities of midgut homogenates were also evaluated by in-solution assays using the fluorogenic substrate Z-Phe-Arg-AMC. For both assays, 100 µM of substrate was used. The reactions were initiated by diluting 10 µg of protein from the midgut in 100 mM sodium acetate (at pH 3.5 or 5.5) or 100 mM Tris-HCl (pH 7.5 or 10.0) for pH evaluation or 100 mM Tris-HCl pH 7.5 with or without 100 µM TLCK, 100 µM TPCK, 20 µM E-64 or 5 mM PMSE. The fluorescence intensity was measured by spectrophotofluorometry every 5 min for a 60 min period (SpectraMax Gemini XPS, Molecular Devices, CA) using excitation and emission wavelengths of 380 and 460 nm, respectively. As blank, the substrate (100 µM) was diluted in the reaction buffer [100 mM sodium acetate (at pH 3.5 or 5.5) or 100 mM Tris-HCl (pH 7.5 or 10.0)]. The value of the blank was automatically discounted by the fluorometer software (SoftMax®Pro, Molecular Devices, CA) when the data were acquired. All assays were performed at 37°C. The results were derived from three independent experiments performed in triplicate.

2DE electrophoresis and protein identification

Protein extraction, separation and identification were performed as previously described [33]. Briefly, 50 pooled midguts were mechanically disrupted with a pestle and a motor drive in a tube containing lysis buffer (9 M urea, 4% CHAPS, 65 mM dithiothreitol, DTT, and 1% ampholytes, pH 3–10, with 5 mM PMSF and a protease inhibitor cocktail). Proteins were precipitated and resuspended in 9 M urea, 4% CHAPS, 65 mM DTT and 1% ampholytes, pH 3–10 NL. The protein concentration was determined using the 2D Quant Kit (GE Healthcare), and 100 µg were subjected to isoelectric focusing over a nonlinear pH gradient of 3–10 on a 7 cm strip (GE Healthcare) on an Ettan IPGphor 3 instrument (GE Healthcare). The focusing parameters were set as previously described [33]. After reduction and alkylation, proteins were separated vertically across 12% SDS-PAGE gels using standard Tris/glycine/SDS buffer. Gels were stained with colloidal Coomassie Brilliant Blue G-250, documented using a GS-800™ calibrated imaging densitometer (Bio-Rad) and analyzed using PDQuest™ software (Bio-Rad). Experimental *pI* and *Mr* were calibrated using a select set of reliable identification landmarks distributed throughout the entire gel.

Protein digestion, peptide extraction and analysis by mass spectrometry were performed as previously described [33]. Raw MS files were converted to MGF format using Mass Matrix MS Data File converter V. 3.9 <http://www.massmatrix.net/mm-cgi/downloads.py>. To maximize search sensitivity and peptidase identification, the data were searched using OMSSA [35] within the Proteomatic platform 1.2.1 [36] <http://www.proteomatic.org/download.html> and the Mascot MS/MS ion search engine (www.matrixscience.com/search_form_select.html, Matrix Science, Oxford, UK, free online version). As the genome sequences of *A. albopictus* are not available, mass spectra were searched in OMSSA against an *A. aegypti* database downloaded (May 2013) from UniRef100 [37] <http://www.uniprot.org/>, and in MASCOT against the non-redundant database of the National Center for Biotechnology (NCBI). Searches were performed with one missed cleavage, with carbamidomethylation of cysteine residues as a fixed modification, methionine oxidation as a variable modification and mass tolerances of 2.0 and 0.8 Da in OMSSA and 10 ppm and 0.4 Da in MASCOT for precursor and fragment ions, respectively. The Vectorbase database (www.vectorbase.org) was used to search for sequence information about the identified peptidases.

Results and discussion

The *A. albopictus* female midgut exhibits a complex profile of active peptidases

To evaluate the influence of time on the peptidase activities from the midguts of sugar-fed females, we evaluated the proteolytic profiles after 2, 4, 6 12 and 24 h of

incubation at 37°C in pH 7.5 using 1D zymography (Figure 1). The proteolytic profile is composed of at least 13 bands displaying progressive increases in intensity from 2 to 24 h of incubation. However, the proteolytic bands overlapped at 24 h and for this reason, 12 h was chosen for subsequent analyses. The band size range from ~25 to 250 kDa. The proteolytic activities of this mosquito have received little study, focusing mainly on larval activities and on comparisons with *A. aegypti* [38]. Comparisons between the previously reported peptidase profiles from the larval and pupal stages of *A. albopictus* [33] with the profile from the adult midgut obtained here reveals a similar banding pattern of enzymatic activity, suggesting that the peptidases expressed as part of the adult proteolytic machinery are already expressed in the pre-imaginal stages, where they mainly seem to play roles in digestion. Given that this work studied sugar-fed females, the proteolytic profile detected here is likely constitutively expressed by the mosquito throughout its life cycle. The enzymatic activity profile of the adult midgut was more complex after 12 h of reaction compared with the profile previously described for larvae [33] detected after 2 h of reaction, suggesting that these enzymes are expressed at lower levels in the adult stage of this insect. In fact, a reduction in the expression of active peptidases involved in digestion after the last larval ecdysis has been reported for *A. aegypti* and *A. albopictus* using in-solution assays and total protein extracts [39,40]. In sugar-fed females of *A. aegypti*, the expression of trypsin-like serine peptidases at the transcriptional level (“early trypsin”)

has been associated with the activation of other digestive enzymes or other trypsin isoforms that will only be expressed after the ingestion of a blood meal [23,27,41]. In addition, although transcriptomic analysis of *A. aegypti* revealed that adults exclusively express 15 trypsin genes while larvae express 12, both stages share the expression of 39 trypsin coding genes, and the genes expressed by larvae should be more active than those of adults because larvae are constantly feeding [22]. Given the taxonomic proximity between *A. albopictus* and *A. aegypti*, trypsin expression in adults of *A. albopictus* is likely similar to the expression pattern in larvae.

Influence of the pH on the proteolytic profile of the *A. albopictus* midgut

We observed that the proteolytic activities of the midgut are modulated by the pH of the reaction buffer. While peptidase activities were detected as low as pH 5.5, the intensity of these activities was increased at alkaline pH between 7.5 and 10.0. Little activity was detected at pH 3.5 (Figure 2A). Although the activities seem to be optimal at pH 10.0, several bands overlap, preventing accurate analysis. For this reason, all subsequent assays were conducted at pH 7.5. The effect of pH on peptidase activity was corroborated by in-solution assays using fluorogenic substrates (Figure 2B). Similar to data obtained previously for larval instars and pupae [33], peptidases from the *A. albopictus* adult midgut exhibited optimal activities at alkaline pH. This characteristic has also been observed for other Diptera such as *Culex quinquefasciatus* [5] and *L. longipalpis* [42] using both in-gel and in-solution assays. According to previous reports, the activities of enzymes involved in digestion processes are optimal at alkaline pH [37-39]. Therefore, the data obtained here suggest that the proteolytic activities observed in the midgut are mainly involved in nutrient processing.

Proteolytic activities in the *A. albopictus* female midgut mainly arise from trypsin-like serine peptidases

Inhibition assays were conducted using specific peptidase inhibitors to ascertain the classes of peptidase activities detected in the midgut of *A. albopictus* females. The proteolytic activities were inhibited by 1 mM PMSF and 100 μM TLCK (Figure 3A). The zymographic profile was not affected by 100 μM TPCK, 10 μM E-64 (Figure 3A), 10 μM pepstatin A or 10 mM 1,10-phenanthroline (data not shown). As PMSF and TLCK are inhibitors of serine peptidases and trypsin-like serine peptidases, respectively, these results indicate that the main peptidases detected by zymography in the female midgut are trypsin-like serine peptidases. Protein extracts from the female midgut were also reacted with the fluorogenic substrate Z-Phe-Arg-AMC in the presence or absence of 5 mM PMSE, 100 μM TLCK, 100 μM TPCK or 20 μM E-64. These activities

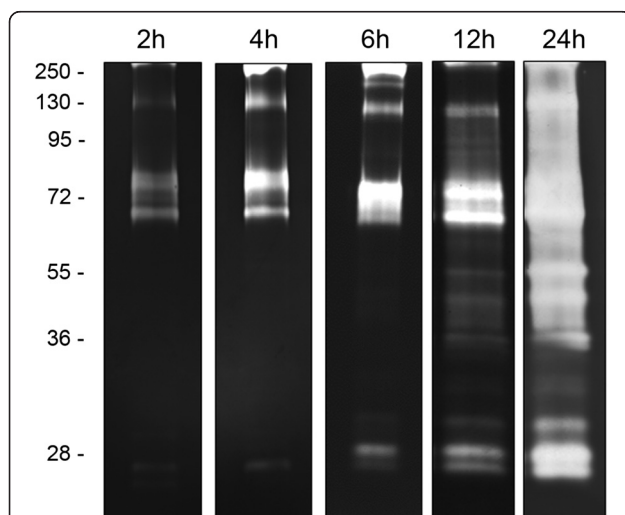


Figure 1 Time course of the proteolytic activities exhibited by the *A. albopictus* midgut. Proteolytic activities were evaluated after 2, 4, 6, 12 and 24 h of incubation in 0.1 M Tris-HCl buffer (pH 7.5). The numbers on the left indicate the apparent molecular masses of the peptidases (kDa).

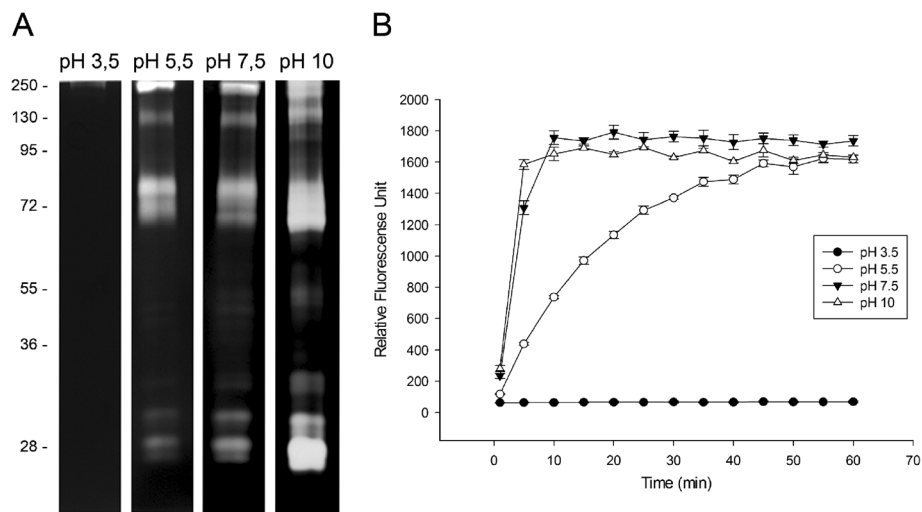


Figure 2 Influence of pH and temperature on the proteolytic profiles of the *A. albopictus* midgut. The effect of pH on the proteolytic activities was evaluated by the incubation of protein extracts in 0.1 M sodium acetate buffer pH 3.5 or 5.5 or 0.1 M Tris-HCl buffer pH 7.5 or 10.0. **(A)** Zymographic gels incubated at 37°C for 12 h. The numbers on the left indicate the apparent molecular masses of the peptidases (kDa). **(B)** In-solution assays performed using the fluorogenic substrate Z-Phe-Arg-AMC.

were again strongly inhibited by PMSF and TLCK, but not by TPCK, (Figure 3B) corroborating the in-gel results. The occurrence of trypsin-like serine peptidases has been described in the larvae of *A. aegypti* and *A. albopictus* using both in-solution assays [38,39] and zymographic analysis [33,43]. The main peptidases detected in other Diptera species also belong to the serine peptidase class [42,44,45].

Trypsin-like serine peptidases and chymotrypsin were identified in the 2DE map of the *A. albopictus* female midgut

With the aim of identifying the peptidases detected in the zymographic assays, several protein spots resolved in the alkaline region of 2D gel maps from the *A. albopictus* female midgut previously obtained and reported by our group [33] were excised and analyzed by MS. Two protein

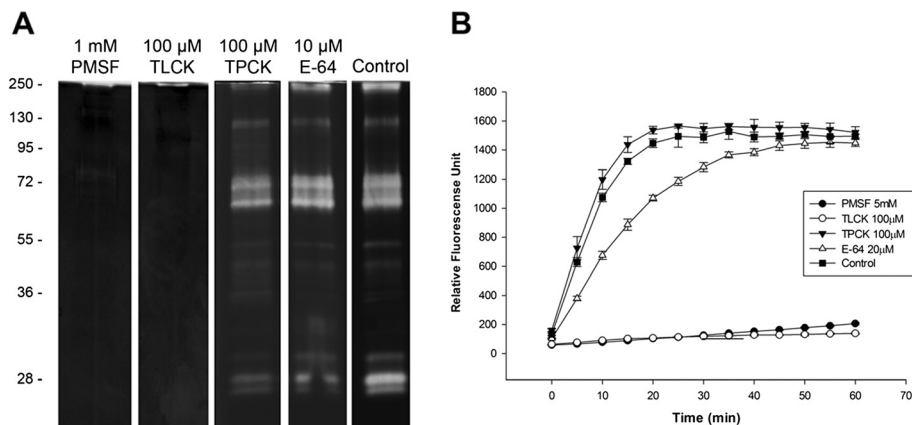


Figure 3 Effects of peptidase inhibitors on the proteolytic profiles of the *A. albopictus* midgut and quantitative in-solution assays for the proteolytic activities. **(A)** Samples were pre-incubated for 30 min in the presence of 1 mM PMSF, 100 μM TLCK, 100 μM TPCK and 10 μM E-64. The proteolytic activities were detected after incubating the gels for 12 h at 37°C in Tris-HCl buffer, pH 7.5. The control samples were processed in the same way but in the absence of inhibitors. The numbers on the left indicate the apparent molecular masses of the peptidases (kDa). **(B)** The in-solution assays were performed using the fluorogenic substrate Z-Phe-Arg-AMC in the absence (control) or presence of 5 mM PMSF, 100 μM TLCK, 100 μM TPCK and 20 μM E-64 in 100 mM Tris-HCl buffer, pH 7.5.

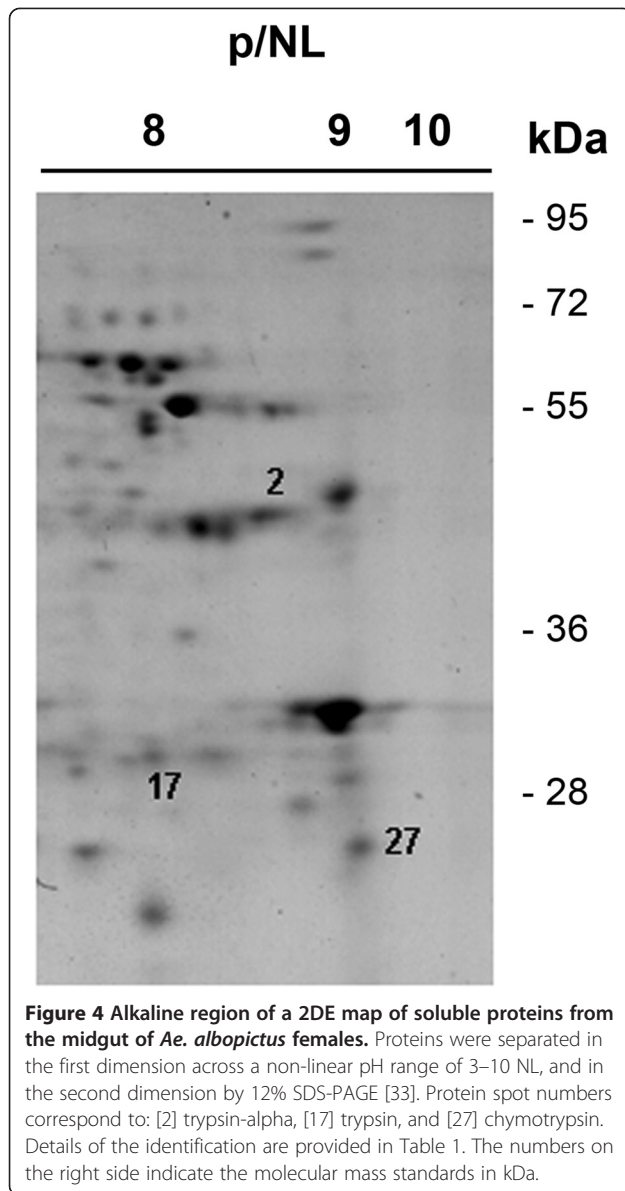


Figure 4 Alkaline region of a 2DE map of soluble proteins from the midgut of *Ae. albopictus* females. Proteins were separated in the first dimension across a non-linear pH range of 3–10 NL, and in the second dimension by 12% SDS-PAGE [33]. Protein spot numbers correspond to: [2] trypsin-alpha, [17] trypsin, and [27] chymotrypsin. Details of the identification are provided in Table 1. The numbers on the right side indicate the molecular mass standards in kDa.

spots corresponding to trypsin alpha (AAEL008079) and trypsin (AAEL006425), respectively, and one spot corresponding to chymotrypsin (AAEL009680) were identified by their similarity to the *A. aegypti* sequences through the two search engines used for protein identification (Figure 4, Table 1). When the protein spots identified in the 2DE gel were compared to the proteolytic profile by 1D zymography, we observed that the molecular masses of peptidases identified by 2DE correspond to the apparent molecular masses of some of the proteolytic bands. The sequence alignment of both trypsin genes demonstrates very little similarity among the sequences. In addition, the peptide sequences identified by MS/MS for each gene are also different (Figure 5). Interestingly, while a chymotrypsin gene was identified by MS/MS in the midgut 2DE map, we did not observe this peptidase activity in the zymographic assays. This result may indicate that (i) this enzyme is expressed in the midgut of sugar-fed females but is not active under these conditions, *i.e.*, it may be active only under blood feeding condition; or (ii) that, despite being expressed, the chymotrypsin is not active in the adult stage of the insect, *i.e.*, this enzyme could be active only in other stages of the insect life cycle.

Although the *A. aegypti* genome has been reported to code for 380 trypsin-like serine peptidases, constituting one of the largest gene families in mosquitoes [22], the interrogation of the Vectorbase database using the words “trypsin” or “chymotrypsin” reveals only 80 coding genes for trypsin and 5 coding genes for chymotrypsin in the *A. aegypti* genome, among which are the genes identified here. As these peptidases are members of large gene families, it is difficult to ascertain which protein is expressed and active in a specific life cycle stage, in a specific tissue, under a specific condition. Therefore, we cannot rule out the possibility that other proteases, such as chymotrypsin, could be expressed in their active form in the midgut of blood feeding females. Our study shows the potential value of proteomic approaches combined with zymographic analysis for the identification and localization assignment of specific gene products.

Table 1 *Aedes albopictus* midgut peptidases automatically identified using the Mascot software

Spot code	Protein name	NCBI Accession No.	VectorBase DB No.	Theor/Exp MW	Theor/Exp pI	Matching pep./Pep. identified by MS/MS	Peptide sequence	Error ± ppm	Protein score	Ion score
27	Chymotrypsin, putative [<i>Aedes aegypti</i>]	gi 157123854	AAEL009680	26.5/25.8	9.0/9.3	1(1)	R.SNELQTLYQK.T	3	64	64
2	Trypsin-alpha, putative [<i>Aedes aegypti</i>]	gi 157117906	AAEL008079	32.1/40.8	8.0/8.8	1(1)	K.GACNGDLGGPLVCDAR.L	3	78	78
17	Trypsin [<i>Aedes aegypti</i>]	gi 157113343	AAEL006425	29.6/29.6	8.6/8.2	1(1)	R.IVGGFEIDITDAPHQVSLQSR.G	4	106	106

Spot codes correspond to spot numbers in Figure 4. MW: molecular weight. pI: isoelectric point. ppm: parts per million.

CLUSTAL O(1.1.0) multiple sequence alignment

```

gi|157117906|trypsin-alpha      MPWSIECSTVIAFVVCLLVAA-----P-----IEASEWQQR
gi|157113343|trypsin          -----MLRLCVLISVLLVSAYGNVLPESDVLPTLPRPRYGQYS
AVPSLRGNRI
      : :*:*:..                      *          *   : **
gi|157117906|trypsin-alpha      VGGSNATGNACPHAVAIRLVGRDFHCNGALITTDVLTAAQCVYNG
VVRNASEFQVLVG
gi|157113343|trypsin          VGGFPEIDITDAPHQVSLQSRG-SHICGGSIIISPEWVLTAAHCTD
GASA----SNLRVVRG
*** : . . ** *::: * . . * *::: : *****: . . . . * : : : *
gi|157117906|trypsin-alpha      SLASSNSSGGTIRNVTAVWPHPSYLANTRLNDVAVLRLSATVQSSAS
LTPVQLST--ANP
gi|157113343|trypsin          --STKHASGGAVVSI SRIVQHPQF SYSTIDYDYSLLKLAKKVTLGN
S SQVIALPEQDEPV
      : : : : *****: : : : * : . * * : : * : * : *
gi|157117906|trypsin-alpha      VVNRCTCLCGWGANSTTGKPLATLQRDLDTVQPSNATYCTLTN-GN
VALPTGQICAGVLA
gi|157113343|trypsin          PDGTLCEVSGWGNTPQSTIQSRDKLRAAYV--PSYNQAQCNKAYS
M YGGVTD RMICAGFQQ
      * : . *** . . : : . * : : * : * . : . : * * *
gi|157117906|trypsin-alpha      AGK GACNGDLGGPLVCDARLQGI LTVVGGCGALNETSIFVNTV
THRDMINNRLLQT PGG
gi|157113343|trypsin          GSKDACQGDGGPLVANGKLVGI VSWGLGCAQPNYPGVY SRVAAAR
DWIRSN SGV----
. ** ** : * * * * * : : * * : : * * . * : : . . . : * * * : : .
gi|157117906|trypsin-alpha      GSGTGGGGGGTGGSGGGGGAAQVMQIIVVMM PVLVLLALL
gi|157113343|trypsin          -----
  
```

Figure 5 Sequence alignment of trypsin-alpha and trypsin genes detected in the midgut of *A. albopictus*. Identical residues are marked with an asterisk; residues with strongly similar properties are marked with a colon; residues with slightly similar properties are indicated with a period. Peptides identified in each protein by mass spectrometry are highlighted in gray.

Conclusion

The results obtained in this work allowed us to detect, identify and characterize the expression of active trypsin-like serine peptidases in the midgut of sugar-fed *A. albopictus* females. In addition, proteomic analysis allowed us to confidently assign the expression of two trypsin genes and one chymotrypsin gene to the midgut of this mosquito. These results contribute to the gene annotation in this species of an unknown genome and represent a small but important step toward the protein-level functional assignment of trypsin-like serine peptidase genes in the *Aedes* genus. As peptidases exert crucial roles during host-pathogen interactions and the midgut is the main setting for these interactions in blood feeding vector mosquitoes, the mapping and identification of the constitutively expressed peptidase profile in this tissue may allow for the comparison of the regulation of such enzymes in infected insects and/or mosquitoes fed on blood. Such approaches may produce valuable information on the roles of peptidases during host-pathogen interactions.

Competing interests

The authors declare that they have no competing interests.

Authors' contributions

JB, LSV and PC designed the study. LSV, ABV, NPS and GDL performed the experimental work. LSV, PC and JB analyzed the data and prepared the manuscript with the critical input of CB. All authors read and approved the final manuscript.

Acknowledgements

This work was supported by FAPEMIG (J.B.J Edital Universal Process No. APQ-01070-12), CNPq (J.B.J. PQ Process No. 308679/2012-1; L.S.V. Process No.

142964/2009-3), FAPERJ (C.B. Process E-26/110.594/2012 and CNE E-26/102.775/2012), FIOCRUIZ-IOC and CAPES. We thank Prof. Dr. Nildimar Honorio (Laboratório de Transmissores de Hematozoários of the Instituto Oswaldo Cruz) for kindly providing the insects.

Author details

¹Laboratório de Biologia Molecular e Doenças Endêmicas, Instituto Oswaldo Cruz, FIOCRUZ, Rio de Janeiro, Brazil. ²Laboratório de Pesquisa em Leishmaniose, Instituto Oswaldo Cruz, FIOCRUZ, Rio de Janeiro, Brazil. ³Universidade Federal de São João del Rei, São João del Rei, MG, Brazil.

Received: 26 August 2013 Accepted: 6 May 2014

Published: 30 May 2014

References

1. Wong PS, Li MZ, Chong CS, Ng LC, Tan CH: *Aedes (Stegomyia) albopictus* (Skuse): a potential vector of *Zika virus* in Singapore. *PLoS Negl Trop Dis* 2013, **17**: e2348.
2. WHO: *Yellow Fever Factsheet*. Geneva: World Health Organization; 2001.
3. Hsieh YH, Chen CW: **Turning points, reproduction number, and impact of climatological events for multi-wave dengue outbreaks.** *Trop Med Int Health* 2009, **14**:628–638.
4. Angelini R, Finarelli AC, Angelini P, Po C, Petropulacos K, Macini P, Fiorentini C, Fortuna C, Venturi G, Romi R, Majori G, Nicoletti L, Rezza G, Cassone A: **An outbreak of chikungunya fever in the province of Ravenna.** *Italy Euro Surveill* 2007, **12**, E070906.1.
5. Gomes Ade C, Bitencourt MD, Natal D, Pinto PL, Mucci LF, de Paula MB, Urbinatti PR, Barata JM: ***Aedes albopictus* in rural zone of Brazil and its implication in the wild yellow fever transmission.** *Rev Saude Publica* 1999, **33**:95–97.
6. Knudsen AB: **Global distribution and continuing spread of *Aedes albopictus*.** *Parassitologia* 1995, **37**:91–97.
7. Waldoek J, Chandra NL, Lelieveld J, Proestos Y, Michael E, Christophides G, Parham PE: **The role of environmental variables on *Aedes albopictus* biology and chikungunya epidemiology.** *Pathog Glob Health* 2013, **107**:224–241.
8. Borges-Veloso A, Saboia-Vahia L, Cuervo P, Pires RC, Britto C, Fernandes N, d'Ávila-Levy CM, De Jesus JB: **Proteolytic profiling and comparative analyses of active trypsin-like serine peptidases in preimaginal stages of *Culex quinquefasciatus*.** *Parasit Vectors* 2012, **5**:123.

9. Bartoszewska M, Williams C, Kikhney A, Opaliński Ł, van Roermund CW, de Boer R, Veenhuis M, van der Klei IJ: **Peroxisomal proteostasis involves a Lon family protein that functions as protease and chaperone.** *J Biol Chem* 2012, **287**:27380–27395.
10. Weidlich S, Huster J, Hoffmann KH, Woodring J: **Environmental control of trypsin secretion in the midgut of the two-spotted field cricket, *Gryllus bimaculatus*.** *J Insect Physiol* 2012, **58**:1477–1484.
11. Wolfson JL, Murdock LL: **Diversity in digestive proteinase activity among insects.** *J Chem Ecol* 1990, **16**:1089–1102.
12. Felix CR, Betschart B, Billingsley PF, Freyvogel TA: **Post-feeding induction of trypsin in the midgut of *Aedes aegypti* is separable into two cellular phases.** *Insect Biochem* 1991, **21**:197–203.
13. Barillas-Mury C, Wells MA: **Cloning and sequencing of the blood meal-induced late trypsin gene from the mosquito *Aedes aegypti* and characterization of the upstream regulatory region.** *Insect Mol Biol* 1993, **2**:7–12.
14. Kalkhok SE, Tabak LM, Prosser DE, Brook W, Downe AE, White BN: **Isolation, sequencing and characterization of two cDNA clones coding for trypsin-like enzymes from the midgut of *Aedes aegypti*.** *Insect Mol Biol* 1993, **2**:71–79.
15. Jiang Q, Hall M, Noriega FG, Wells M: **cDNA cloning and pattern of expression of an adult, femalespecific chymotrypsin from *Aedes aegypti* midgut.** *Insect Biochem Mol Biol* 1997, **27**:283–289.
16. Bian G, Raikhel AS, Zhu J: **Characterization of a juvenile hormone-regulated chymotrypsin-like serine protease gene in *Aedes aegypti* mosquito.** *Insect Biochem Mol Biol* 2008, **38**:190–200.
17. Polgár L: **The catalytic triad of serine peptidases.** *Cell Mol Life Sci* 2005, **62**:2161–2172.
18. Rawlings ND, Barrett AJ: **Families of serine peptidases.** *Meth Enzymol* 1994, **244**:19–61.
19. Craik CS, Largman C, Fletcher T, Roczniak S, Barr PJ, Fletterick R, Rutter WJ: **Redesigning trypsin: alteration of substrate specificity.** *Science* 1985, **228**:291–297.
20. Terra WR, Ferreira C: **Insect digestive enzymes: properties, compartmentalization and function.** *Comp Biochem Physiol* 1994, **109**:1–62.
21. Barrett AJ: **Bioinformatics of proteases in the MEROPS database.** *Curr Opin Drug Discov Devel* 2004, **7**:334–341.
22. Venancio TM, Cristofaletti PT, Ferreira C, Verjovski-Almeida S, Terra WR: **The *Aedes aegypti* larval transcriptome: a comparative perspective with emphasis on trypsins and the domain structure of peritrophins.** *Insect Mol Biol* 2009, **18**:33–44.
23. Noriega FG, Pennington JE, Barillas-Mury C, Wang XY, Wells MA: ***Aedes aegypti* midgut early trypsin is post-transcriptionally regulated by blood feeding.** *Insect Mol Biol* 1996, **5**:25–29.
24. Wu DD, Guo-Dong W, Irwin DM, Zhang YP: **A profound role for the expansion of trypsin-like serine protease family in the evolution of hematophagy in mosquito.** *Mol Biol Evol* 2009, **26**:2333–2341.
25. Borovsky D, Schlein Y: **Quantitative determination of trypsin-like and chymotrypsin like enzymes in insects.** *Arch Insect Biochem Physiol* 1988, **8**:249–260.
26. Gorman MJ, Paskewitz SM: **Serine proteases as mediators of mosquito immune responses.** *Insect Biochem Mol Biol* 2001, **31**:257–262.
27. Noriega FG, Wells MA: **A molecular view of trypsin synthesis in the midgut of *Aedes aegypti*.** *J Insect Physiol* 1999, **45**:613–620.
28. Shahabuddin M, Kaslow DC: **Biology of the development of *Plasmodium* in the mosquito midgut: a molecular and cellular view.** *Bull Inst Pasteur* 1994, **92**:119–132.
29. Telleria EL, Araújo APO, Secundino NF, d'Avila-Levy CM, Traub-Csekö YM: **Trypsin-like serine proteases in *Lutzomyia longipalpis* – expression, activity and possible modulation by *Leishmania infantum chagasi*.** *PLoS One* 2010, **5**:e10697.
30. Shahabuddin M, Lemos FJ, Kaslow DC, Jacobs-Lorena M: **Antibody-mediated inhibition of *Aedes aegypti* midgut trypsins blocks sporogonic development of *Plasmodium gallinaceum*.** *Infect Immun* 1996, **64**:739–743.
31. Broadwell AH, Baumann P: **Proteolysis in the gut of mosquito larvae results in further activation of the *Bacillus sphaericus* toxin.** *Appl Environ Microbiol* 1987, **53**:1333–1337.
32. Lau YS, Sulaiman S, Othman H: **The effectiveness of Trypsin Modulating Oostatic Factor (TMOF) and combinations of TMOF with *Bacillus thuringiensis* against *Aedes aegypti* larvae in the laboratory.** *Iran J Arthropod-Borne Dis* 2011, **5**:13–19.
33. Saboia-Vahia L, Borges-Veloso A, Cuervo P, Junqueira M, Mesquita-Rodrigues C, Britto C, Domont GB, De Jesus JB: **Protein expression in the midgut of sugar-fed *Aedes albopictus* females.** *Parasit Vectors* 2012, **5**:290.
34. Galán JE, Pace J, Hayman MJ: **Involvement of the epidermal growth factor receptor in the mammalian cells by *Salmonella typhimurium*.** *Nature* 1992, **357**:588–589.
35. Geer LY, Markey SP, Kowalak JA, Wagner L, Xu M, Maynard DM, Yang X, Shi W, Bryant SH: **Open mass spectrometry search algorithm.** *J Proteome Res* 2004, **3**:958–964.
36. Specht M, Kuhlert S, Fufezan C, Hippler M: **Proteomics to go: Proteomatic enables the user-friendly creation of versatile MS/MS data evaluation workflows.** *Bioinformatics* 2011, **27**:1183–1184.
37. Suzek BE, Huang H, McGarvey P, Mazumder R, Wu CH: **UniRef: comprehensive and non-redundant UniProt reference clusters.** *Bioinformatics* 2007, **23**:1282–1288.
38. Ho BC, Khoo HG, Chew LM, Wong KP, Ewert A: **Food ingestion and digestive enzymes in larval *Aedes aegypti* and *Aedes albopictus* (Diptera: Culicidae).** *J Med Entomol* 1992, **29**:960–964.
39. Yang YJ, Davies D: **Trypsin and chymotrypsin during metamorphosis in *Aedes aegypti* and properties of the chymotrypsin.** *J Insect Physiol* 1971, **17**:117–131.
40. Borovsky D, Meola SM: **Biochemical and cytoimmunological evidence for the control of *Aedes aegypti* larval trypsin with Aea-TMOF.** *Arch Insect Biochem Physiol* 2004, **55**:124–139.
41. Muhlia-Almazán A, Sánchez-Paz A, García-Carreño F: **Invertebrate trypsins: a review.** *J Comp Physiol B* 2008, **178**:655–672.
42. Fazito-do-Vale V, Pereira MH, Gontijo NF: **Midgut pH profile and protein digestion in the larvae of *Lutzomyia longipalpis* (Diptera: Psychodidae).** *J Insect Physiol* 2007, **53**:1151–1159.
43. Mesquita-Rodrigues C, Saboia-Vahia L, Cuervo P, Masini d'Avila Levy C, Alves-Honório N, Domont GB, De Jesus JB: **Expression of Trypsin-like serine peptidases in préimaginal stages of *Aedes aegypti* (Diptera: Culicidae).** *Arch Insect Biochem Physiol* 2011, **76**:223–235.
44. Tabouret G, Bret-Bennis L, Dorchie P, Jacquet P: **Serine protease activity in excretory-secretory products of *Oestrus ovis* (Diptera: Oestridae) larvae.** *Vet Parasitol* 2003, **114**:305–314.
45. Pires FA, Moya-Borja GE, Barreira JD, Pinho RT, Alves CR: **The main proteinases in *Dermatobia hominis* second and third instars larvae are serine-proteinases.** *Vet Parasitol* 2007, **145**:326–331.

doi:10.1186/1756-3305-7-253

Cite this article as: Saboia-Vahia et al.: The midgut of *Aedes albopictus* females expresses active trypsin-like serine peptidases. *Parasites & Vectors* 2014 **7**:253.

Submit your next manuscript to BioMed Central and take full advantage of:

- Convenient online submission
- Thorough peer review
- No space constraints or color figure charges
- Immediate publication on acceptance
- Inclusion in PubMed, CAS, Scopus and Google Scholar
- Research which is freely available for redistribution

Submit your manuscript at
www.biomedcentral.com/submit

